

# CHAMBERLINK

JANUARY 2023



Small Business of the Year Entrepreneurial Spirit Award Winner - Kids Korner  
See inside for more Small Business of the Year Finalists and Winners

## STAFF

### Jodie A. Perry, CCE, IOM, CCEO-AP

Chief Operating Officer  
Phone extension 102

### Angie Cirone

Foundation Director  
Phone extension 103

### Patrick Clinage

Executive Assistant & Sector  
Coordinator  
Phone extension 101

### Lisa Duckworth

Programs & Events Manager  
Phone extension 105

### Angie Fanello

Marketing & Communications  
Coordinator  
Phone extension 115

### Jessica Gribben

Economic Development Manager  
Phone (419) 342-4159

### Kathy Fox

Front Office Coordinator  
Phone extension 107

### Clint Knight

Workforce Development Director  
Phone extension 112

### Sandy Messner

Marketing & Communications Director  
Phone extension 104

### Barrett Thomas

Economic Development Director  
Phone extension 111

### Jennifer Wagner

Member Services Coordinator  
Phone extension 110

55 N. Mulberry St.

Mansfield, OH 44902

Phone: (419) 522-3211

Fax: (419) 526-6853

info@richlandareachamber.com



## Ohio Businesses Play an Important Role in Combatting Unemployment Fraud



Department of  
Job and Family Services

Ohio, like the rest of the nation, dealt with unprecedented levels of unemployment claims—and unemployment fraud—over the course of the pandemic. This fraud impacted claimants and employers alike. To date, the Ohio Department of Job and Family Services (ODJFS) has recovered nearly \$400 million in fraudulently obtained benefits. But the sad reality is that we now live in a world where criminals see unemployment as an ongoing target.

It's possible some individuals are only finding out now that their identity was compromised. Each year after Oct. 15 (the last tax-filing date for those who requested extensions), the IRS reconciles the information we send them with submitted tax forms. They may contact individuals who appear to have received benefits that they didn't report – when in fact these individuals were the victims of identity theft. If this happens, and the benefits were paid from Ohio, we are encouraging individuals to file reports at our online fraud portal at [unemploymenthelp.ohio.gov/IdentityTheft](https://unemploymenthelp.ohio.gov/IdentityTheft). That way, we can conduct an investigation and, if necessary, issue a corrected 1099-G form to the IRS.

To combat attempts to steal unemployment benefits, ODJFS has dramatically changed the way it addresses fraud. Cyber-defense efforts include a suite of anti-fraud measures, such as multi-factor authentication and enhanced ID-proofing. These steps have dramatically decreased fraudulent claim attempts.

Ohio businesses also have a role in combating unemployment fraud. Please respond timely to any correspondence you receive from ODJFS—particularly any “Request for Separation Information” notices you may receive. Responding timely to these notices, and writing “fraud/identity theft” on them, helps ODJFS more quickly investigate the claims and take appropriate action.

The most expedient way for employers to respond to “Request for Separation Information” forms is through their online accounts or via the State Information Data Exchange System (SIDES) portal or SIDES E-Response, which is designed for employers and third-party administrators with fewer unemployment claims.

You can learn more about both SIDES and SIDES E-Response at: <https://jfs.ohio.gov/ouio/SIDES.stm> or by watching this short video: <https://www.odjfs.state.oh.us/tutorials/OUIO/SIDES/SIDES.mp4>.



### Commercial Steel & Aluminum Entry Doors

J&B repairs & replaces steel & Aluminum door systems

#### Repairs

Steel & Aluminum entrance door repair services include: hinge replacement, continuous gear hinges, exit devices, locksets, door closers, thresholds and weather-stripping.

#### Replacement

We can remove your old Steel or Aluminum Door systems and replace it with a new one.

**\* CALL TODAY FOR A QUOTE \***  
2750 Lexington Avenue • PO BOX 3015 • Mansfield, OH 44904  
Phone (419) 884-1155 • (419) 884-1188 • Fax (419) 884-1188  
[www.jb-ohio.com](http://www.jb-ohio.com)



# CONGRATULATIONS

## TO OUR 2022 AWARD WINNERS



**CULLIGAN QUALITY WATER OF NCO**  
15+ Employee Category



**ALTRUSA OF MANSFIELD**  
Small Nonprofit of the Year



**BEER'S AUTOMOTIVE SERVICE & REPAIR**  
14 Employees & Under



**RENAISSANCE PERFORMING ARTS**  
Large Nonprofit of the Year

## FINALISTS



**MANSFIELD  
DAIRY QUEEN**



**JPB PROFESSIONAL  
MARKETING**



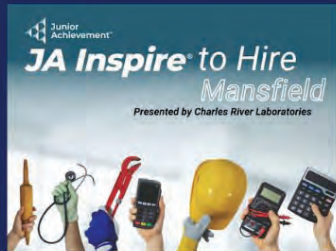
**PURDY CONSTRUCTION**



**VITALITY NATURAL  
WELLNESS AND MEDSPA**



# 2023 SPRING WORKFORCE EVENTS



A career exploration experience like no other, JA Inspire is a collaboration of educators and industry leaders designed to excite students as they begin discovering their fit in the careers of tomorrow.

Mid Ohio Educational Service Center  
[Click Here to Learn More](#)

The Career Institute Program is a portal to promote career exploration and business practice education by placing students directly into a work environment. The students participate in real-life business solution development.

Contact [cknight@chooserichland](mailto:cknight@chooserichland) for more info.



EmployMEpalooza is a Reverse Job Fair for High School Students looking for Part Time Seasonal Work, Summer Internships, or Full Time Careers after graduation. At this job fair, the job seeker has the table and the employers come to meet them.

Mid Ohio Educational Services Center  
[Click here to register and attend](#)

Leader Richland is an immersive experience for 6th and 7th graders to learn more about local career opportunities. Held at North Central State College/OSU Mansfield each year, over 500 students hear from employers about their businesses, career paths, and opportunities.

Email [pclinage@richlandareachamber.com](mailto:pclinage@richlandareachamber.com) to become a presenter



# Women's Leadership Connection

**TOPIC:** What to Expect When You're Reinventing Your Mind  
**SPEAKER:** Kay Coughlin, CEO of Facilitator On Fire  
**When:** Wednesday, January 18 | 11:45am - 1:00pm  
(lunch is served at 11:45am, program begins at 12pm)  
**Where:** DLX Kobacker Room 28 N. Main Street, Mansfield  
**Cost:** \$15

**REGISTER**



Kay Coughlin

How many times have you been told - or maybe forced - to reinvent yourself? It's all the rage and yet, it's so hard to change. Some of us appear to race towards change while others fight it, and some of us have been known to do both at the same time. Do we face the discomfort and emotional pain, or do we give in to the temptation of settling for the status quo? Reinventing your mind to manage life's changes is unavoidable. Join Kay Coughlin for this talk to find out how to thrive instead of get crushed by all of it. Part how-to and part survival guide, this discussion will help you reconcile the old with the new.

Kay Coughlin, business coach, advocate for family caregivers, and CEO of Facilitator On Fire, is on a mission to help small business leaders and solopreneurs re-ignite their passion for their businesses. In every forum she can find, she shouts that it's OK for every human to earn a living, set and enforce boundaries around their bodies, thoughts, feelings and actions. You can join Kay's free, private online community to talk about boundaries at [FacilitatorOnFire.net/Boundaries](https://FacilitatorOnFire.net/Boundaries). Kay also teaches about emotional labor, how to rest, and Human Giver Syndrome, and is the host of the "From One Caregiver to Another" podcast and author of "From One Caregiver to Another - Overcoming Your Emotional Grind."

**About Women's Leadership Connection:** Formerly Lunch WISE Wednesday, this series exclusively for women is hosted by the Richland Area Chamber. & Economic Development. Each month we'll have a time of powerful networking, a motivational "TED-type" talk as well as a chance to learn more about your community. We look forward to having you join us!

**THREE WAYS TO REGISTER:**

- 1) Click the REGISTER button (or use event calendar at [www.richlandareachamber.com](http://www.richlandareachamber.com))
- 2) Call us at 419-522-3211
- 3) Email Lisa Duckworth at [lduckworth@richlandareachamber.com](mailto:lduckworth@richlandareachamber.com)

## SPONSORSHIP

### Women's Leadership Connection



This event is a great opportunity to reach local business women!

Typical attendance: 40 - 50 business women

Audience: Area business leaders, professionals, support staff, general business crowd

**\$150 Sponsoring a luncheon includes:**

- Name and logo in Chamber newsletter
- Name and logo in Chamber email blast advertising the event
- Two tickets to the luncheon event
- Two minutes at the podium during event
- Opportunity to place promotional items at the tables
- Logo shared on social media



# DECEMBER RIBBON CUTTINGS



**Christmas in the Village -  
Plymouth**



**Edward Jones -  
Mansfield**

**VISIT OUR FACEBOOK PAGE FOR MORE RIBBON CUTTING PICTURES AND VIDEOS!**

---



## Ever thought about helping your employees develop new tech skills?

In the United States, it's projected that by 2030, the time spent using advanced technological skills will increase by 50%. This means more jobs will require employees to understand technology and use their tech skills daily.

### What is TechCred, and how does it work?

Launched by Lt. Gov Jon Husted and the Office of Workforce Transformation in 2019, TechCred helps Ohioans learn new skills through short-term technology-focused credentials while assisting employers in building a more substantial business with the skills needed in a technology-infused economy. Companies can invest in new and current employees to make them their top tech talent.

Companies that submit successful applications will be reimbursed, up to \$2000 per credential, when current or prospective employees complete technology-focused credentials.

### What did our Communications Department learn from their TechCred experience?

In 2022, our Communications Department expanded its InDesign CC skills with the program. The course was offered entirely online through The Computer Workshop Inc., making it easy to access while maintaining an active work schedule. The entire process was simple: we partnered with a provider, completed the certification, and received complete reimbursement from the State of Ohio when we completed it. The skills learned through this program have reduced the hours invested in developing printed and online communication materials.

### Takeaway

TechCred is a win-win for employers who want to invest in growing their business and for qualified workers who want to develop new skills. If your small business is located in Ohio and you'd like to invest in the development of your employees, be sure to check out TechCred today at <https://techcred.ohio.gov/home>. Current application period ends January 31 at 3pm.



**EVEN SUPERHEROES NEED  
A FIGHTING CHANCE  
AGAINST**

**MEASLES**

**FLU**

**COVID-19**



Prevent the spread:

*stay home if you are sick.*

Promote healthy habits:

*frequently wash your hands.*

Protect the people you care about:

*schedule your vaccination*

*at 419-774-4700*



**VACCINES WORK**





## The official health insurer of **entrepreneurs**

---

You put everything you have into your business. And we put everything into creating high-quality health insurance plans for you and your employees. We've partnered with the Richland Area Chamber of Commerce and Council of Smaller Enterprises (COSE) to offer a unique benefit option for small businesses like yours. The multiple employer welfare arrangement (MEWA) allows small businesses of 1–50 to join together to share costs and combine risk. This offers rate stability, savings and the same great health benefits that large corporations have. Bundle your health plan with our dental, vision or life plans for a fully integrated benefits package.

**Contact your broker | [MedMutual.com/Richland](https://www.MedMutual.com/Richland)**



**MEDICAL MUTUAL®**  
Health | Dental | Vision | Life



# CERTIFICATION WORKSHOP SERIES



Minority Business  
Assistance Centers

Akron



Akron  
Urban League



LEARN HOW TO APPLY FOR STATE, LOCAL, AND FEDERAL CERTIFICATIONS  
AND WHAT DOCUMENTATION IS REQUIRED

**THURSDAY, JANUARY 12, 2023**  
10AM-12PM ON ZOOM

## CERTIFICATION INFORMATION WORKSHOP

Receive information on the documentation  
required to apply for certifications

**THURSDAY, JANUARY 26, 2023**  
10AM-12PM ON ZOOM

## CERTIFICATION APPLICATION LAB

Receive instruction on how to complete the  
certification applications



### STATE CERTIFICATIONS

MBE/EDGE, VBE, WBE

### SBA/PTAC

WOSB, SDVOB, 8(A), HUBZone

### NORTHEAST OHIO REGIONAL SEWER DISTRICT (NEORS)

SBE, MBE, WBE

### OHIO DEPARTMENT OF TRANSPORTATION (ODOT)

DBE, SBE

DID YOU KNOW THAT GOVERNMENT AGENCIES AND CORPORATIONS OFTEN SET GOALS FOR  
CONDUCTING BUSINESS WITH, AND BUYING FROM, CERTIFIED COMPANIES?  
**BECOME CERTIFIED AND INCREASE YOUR BUSINESS'S APPEAL!**



REGISTER TODAY

## — Expo Booths —

# 2023 BUSINESS EXPO

**GET  
ON  
TRACK!**



Register by  
February 3<sup>th</sup> for  
best pricing!

**Hurry! Booths are limited!**

### **DETAILS:**

- **Thursday, March 23<sup>rd</sup>, 10-4pm, at the Richland County Fairgrounds**
- **Set up will take place from 3-5pm on Wed., March 22<sup>nd</sup>** to allow for the “Expo Eve” **Business After Hours** taking place 5-7pm that evening - 300+ attended in previous years!
- Enjoy an exciting “Get on Track” racing theme!
- Booth prizes will be awarded for: Most Creative, Best Use of Theme, & People’s Choice
- Admission will be free, and once again, many forms of media will be used to promote the Expo to the public.

**COST:** The booth cost is only \$200 if you reserve your space before February 3<sup>rd</sup> (\$250 after this date). Booth size is 8’x10’. This includes 8 ft. table, 2 chairs, and electricity/wifi.

***THIS EVENT WILL SELL OUT! TO GUARANTEE A SPOT, PLEASE RESPOND PROMPTLY!***

**COMPLETE FORM AND RETURN WITH PAYMENT AS SOON AS POSSIBLE TO RESERVE YOUR BOOTH**

Booths are first come, first serve. Online registration is available by visiting the event calendar at [www.RichlandAreaChamber.com](http://www.RichlandAreaChamber.com))

**Organization:** \_\_\_\_\_

**Address:** \_\_\_\_\_

**Contact person:** \_\_\_\_\_ **Email:** \_\_\_\_\_

**Phone:** \_\_\_\_\_ **Fax:** \_\_\_\_\_

**PAYMENT:** ☐ check enclosed ☐ VISA/MC/DISC# \_\_\_\_\_

exp. \_\_\_\_/\_\_\_\_ Security Code \_\_\_\_\_

Address of Cardholder \_\_\_\_\_

**Phone:** 419-522-3211 • **Fax:** 419-526-6853 • **Email:** [lduckworth@richlandareachamber.com](mailto:lduckworth@richlandareachamber.com)

**Mail:** Richland Area Chamber & Economic Development • 55 N. Mulberry St., Mansfield 44902



# — Sponsorships —

## 2023 BUSINESS EXPO - *GET ON TRACK!*

Previous attendance = 1,000 +

Booth space has sold out the past five events!

<p><b>New!</b> Presenting Sponsor — \$3,000 (Limited to One)</p> <ul style="list-style-type: none"> <li>• Naming rights (Business Expo presented by...)</li> <li>• Double booth space at main entrance, facing incoming guests</li> <li>• Facebook Live interview at event streamed from Chamber's page</li> <li>• Banner with your company name hung in prime location</li> <li>• Your booth featured on cover of April Chamber Link Newsletter</li> <li>• Company logo on booth map provided to attendees</li> <li>• Logo (large) on sponsor banner displayed at Expo</li> <li>• Logo (large) on tote bag given to attendees</li> <li>• Logo (large) on posters displayed at Expo</li> <li>• Logo on any major print media Expo ads</li> <li>• Featured interview with company representative via live radio broadcast</li> <li>• Name on Expo radio ads</li> <li>• Logo &amp; link on Chamber website for Expo</li> <li>• Paid social media campaign featuring company photo (\$\$\$\$)</li> <li>• Logo in Chamber newsletter</li> <li>• Up to 3 items in tote bag given to attendees</li> <li>• Logo on Chamber email blasts for Expo</li> <li>• Inclusion in press release</li> <li>• Right of first refusal for next year</li> </ul>	<p>Grandstand Sponsor — \$1,200 (Limited to Four)</p> <ul style="list-style-type: none"> <li>• Double booth space in a prime location</li> <li>• An aisle sign will be hung with your company name and also printed on booth maps</li> <li>• Logo (large) on booth map provided to attendees</li> <li>• Logo (large) on sponsor banner displayed at Expo</li> <li>• Logo (large) on tote bag given to attendees</li> <li>• Logo (large) on posters displayed at Expo</li> <li>• Logo on any major print media Expo ads</li> <li>• Name on Expo radio ads</li> <li>• Logo &amp; link on Chamber website for Expo</li> <li>• Paid social media campaign featuring company photo (\$\$\$\$)</li> <li>• Logo in Chamber newsletter</li> <li>• Up to 3 items in tote bag given to attendees</li> <li>• Logo on Chamber email blasts for Expo</li> <li>• Inclusion in press release</li> <li>• Right of first refusal for next year</li> </ul>
<p><b>New!</b> Expo Eve Business After Hours Sponsor — \$900 (Limited to Four)</p> <ul style="list-style-type: none"> <li>• One (1) prime booth space in the Bus. After Hours networking area</li> <li>• After Hours banner with sponsor logos hung in prime location</li> <li>• Business name announced by DJ multiple times throughout event</li> <li>• Name on booth map provided to attendees</li> <li>• Name on tote bag given to attendees</li> <li>• Logo &amp; link on Chamber website and registration materials for Expo Eve Business After Hours</li> <li>• Paid social media campaign featuring company photo (\$\$)</li> <li>• Logo (small) in Chamber newsletter</li> <li>• Up to 2 items in tote bag given to attendees</li> <li>• Logo on Chamber email blasts for Expo Eve Business After Hours</li> <li>• Right of first refusal for next year</li> </ul>	<p>Starting Line Sponsor — \$900</p> <ul style="list-style-type: none"> <li>• One (1) booth space in a prime location</li> <li>• Logo (small) on booth map provided to attendees</li> <li>• Logo (small) on sponsor banner displayed at Expo</li> <li>• Logo (small) on tote bag given to attendees</li> <li>• Logo (small) on posters displayed at Expo</li> <li>• Logo on any major print media advertising</li> <li>• Logo &amp; link on Chamber website for expo</li> <li>• Paid social media campaign featuring company photo (\$\$)</li> <li>• Logo (small) in Chamber newsletter</li> <li>• Up to 2 items in tote bag given to attendees</li> <li>• Logo on Chamber email blasts for Expo</li> </ul>
<p>S-Curve Sponsor — \$600</p> <ul style="list-style-type: none"> <li>• Save \$100 on a booth space</li> <li>• Name on booth map provided to attendees</li> <li>• Name on banner displayed at Expo</li> <li>• Name on tote bag given to attendees</li> <li>• Name on posters displayed at Expo</li> <li>• Name on any major print media advertising</li> <li>• Name &amp; link on Chamber website for Expo</li> <li>• Paid social media campaign featuring company photo (\$\$)</li> <li>• Name in Chamber newsletter</li> <li>• One (1) item in tote bag given to attendees</li> <li>• Name listed on Chamber email blasts for Expo</li> </ul>	<p>Back Stretch Sponsor — \$300</p> <ul style="list-style-type: none"> <li>• Save \$75 on a booth space</li> <li>• Name on booth map provided to attendees</li> <li>• Name on banner displayed at Expo</li> <li>• Name on posters displayed at Expo</li> <li>• Name on any major print media advertising</li> <li>• Name &amp; link on Chamber website for Expo</li> <li>• Paid Expo social media campaign featuring company photo (\$)</li> <li>• Name in Chamber newsletter</li> <li>• Name listed on Chamber email blasts for Expo</li> </ul>



Minority Business  
Assistance Centers

Akron

*Take Your Business  
to the Next level!*

# Business Credit & You

## Virtual Workshop

Tuesday, January 31st, 2023

12:00 – 1:30 pm

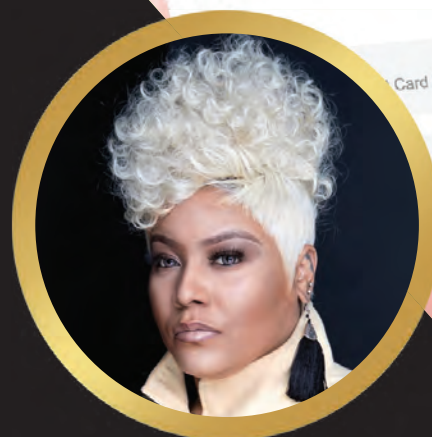
Guest speaker:

Shaundretta Boykins,

Manager of Business Development and  
Entrepreneurship, Office of the Minority Business  
Development Division (MBDD).

Learn more about:

- How Personal Credit Impacts Business Credit
- Business Credit vs Corporate Credit



WORKSHOP IS FREE. REGISTRATION IS REQUIRED.



Akron  
Urban League



# Bank of America Awards RCDG \$10,000 To Support Community Development Efforts



The Bank of America Charitable Foundation recently awarded Richland Community Development Group (RCDG) a \$10,000 grant as part of its broader initiative to support Central Ohio's long-term sustainability by advancing economic mobility and social progress by focusing on the needs of the community.





RCDG will use the funding to support their work in economic development by providing support to businesses that are expanding in workforce development by ensuring a robust pipeline of workers to meet the demands of local expanding businesses, and in community development through their work with the community development sectors.

"We are thankful to Bank of America for their continued support of our organization," said Jodie A. Perry, COO of the RCDG. "Recently, our community has undergone a brand redevelopment to positively reshape our narrative and showcase the thriving and ever-growing community in which we reside. We have also implemented our new 3-year strategic plan for 2022-2025 that will focus on three pillars: Foster Economic Strength, Cultivate Quality Talent, and Champion Community Excellence."

The grant is part of the \$1.83 million in grants that Bank of America has provided to local nonprofits this year. was part of Bank of America's second round of grants in 2022. This round was focusing on economic mobility and social progress through investments in affordable housing, community revitalization, the arts and the environment. These grants are part of the Bank's commitment to responsible growth as it works to improve the financial lives of individuals and families. Philanthropic and volunteer investments play a key role in this effort to build thriving communities.

"Addressing community needs through our philanthropic investments is just one way we deploy capital to help build a more sustainable community," said Kelly D'Ambrosia, Columbus President, Bank of America. "We're honored to partner with nonprofit organizations like Richland Community Development Group (RCDG) across Central Ohio that are helping to advance economic and social progress, in particular for vulnerable populations."

**Private Business Advisory**  
CPAs & Advisors



Coaches inspire teams, execute strategy, and champion change.


“Setting a goal is not the main thing. It is deciding how you will go about achieving it and staying with that plan.”

~Tom Landry


Similarly, at HW&Co., our **Private Business Advisory** team leads our clients in selecting the correct strategic decisions to meet their business goals and achieve success.

Our team has the resources and experience to guide you in preserving and growing the business you've worked so hard to build, while upholding the highest standards of tax, accounting, and assurance services.


**Let Us Be Your Coach**



Kim Zagar, CPA  
Principal, Director of Private Business Advisory

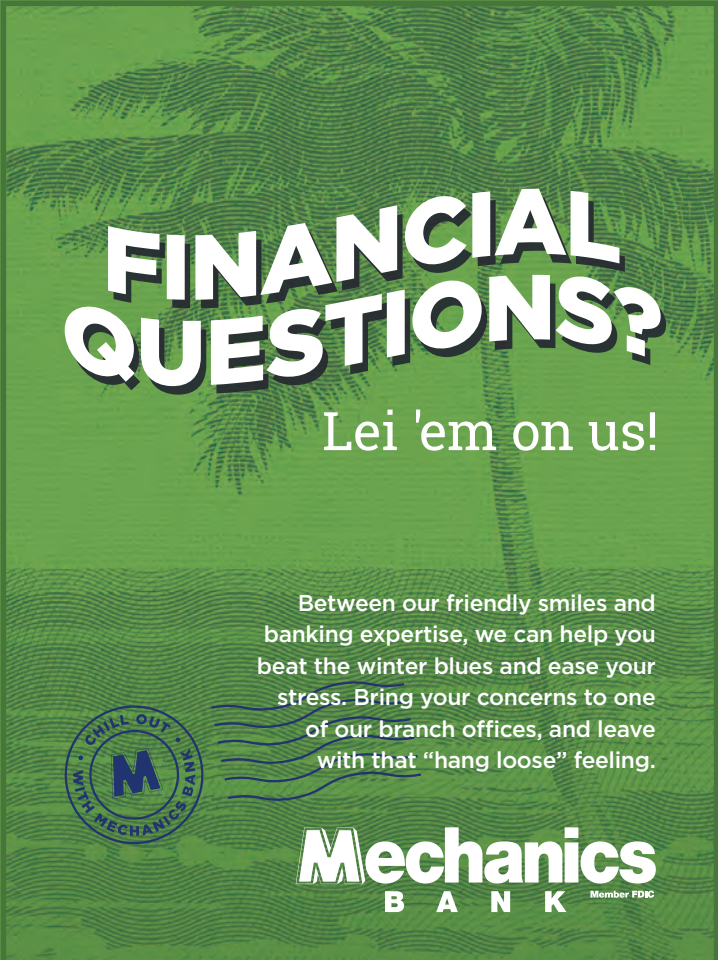


Dave Shealy, CPA, CPMG  
Managing Principal, Mansfield Office



Conversations That Change Everything<sup>SM</sup>


[www.hwco.cpa](http://www.hwco.cpa) 614-794-8710



# FINANCIAL QUESTIONS?

Lei 'em on us!

Between our friendly smiles and banking expertise, we can help you beat the winter blues and ease your stress. Bring your concerns to one of our branch offices, and leave with that "hang loose" feeling.



**Mechanics**  
BANK Member FDIC

# Richland County AND THE CHAMBER OF EXCELLENCE

## Evening of Excellence & Annual Meeting

Wednesday, February 15th, 2023 Social Hour at 5:30pm Dinner at 6:30pm  
at the Mid-Ohio Conference Center

### TICKETS

\$50.00 per person (before Jan 25 - \$55.00 after this date)

Choose One:

Names of Attendees

Chicken  
(gluten free)

Beef

Vegetarian

Minister of Magic Sponsors



ES CONSULTING  
TECHNOLOGY SOLUTIONS PROVIDER



OhioHealth



Hogwarts Headmaster Sponsors



Potions Professor Sponsor: **JPB Professional Marketing**

Keeper of the Keys Sponsor: **Spire**

Griffindor Student Sponsors:

**Nyte Flyte Entertainment, Shanna Stapleton Events**

as of 1-4-23

Please return form with payment to:  
Lisa - lduckworth@richlandareachamber.com  
Richland Area & Economic Development  
55 N. Mulberry Street Mansfield, OH 44902  
Phone: (419) 522-3211 Fax: (419) 526-6853



Tickets also available by  
calling the Chamber at  
419-522-3211 or online at  
RichlandAreaChamber.com



# Richland County and the Chamber of Excellence Annual Meeting Sponsorships

Save the Date –  
February 15  
5:30pm–9pm

## Minister of Magic Sponsor

\$2,000 (Limit of four)

- ◆ 2 Full tables (16 tickets) at the event with VIP seating
- ◆ Table sign with corporate logo
- ◆ Two page ad spread in the program book (each page is 7.5" wide by 10" tall)
- ◆ 4 bottles of wine at the dinner table (2 on each table)
- ◆ Ability to speak for one minute at the podium
- ◆ Multiple verbal recognitions from the podium / sponsorship thank you
- ◆ Logo recognition (dedicated slide) during slide show
- ◆ Logo in a primary location on the welcome banner
- ◆ Logo and link on Chamber website event page
- ◆ Logo recognition in Chamber newsletter and emails
- ◆ Inclusion in press release
- ◆ Social media "thank you"
- ◆ Right of first refusal for next year

## Hogwarts Headmaster Sponsor

\$1,200

- ◆ 1 Full table (8 tickets) at the event with VIP seating
- ◆ Table sign with corporate logo
- ◆ Full page color ad in the program book (7.5" wide by 10" tall)
- ◆ 2 bottles of wine at the dinner table
- ◆ Multiple verbal recognitions from the podium / sponsorship thank you
- ◆ Logo recognition during the slide show
- ◆ Logo on the welcome banner
- ◆ Logo, and link on Chamber website event page
- ◆ Logo recognition in Chamber newsletter and emails

## Potions Professor Sponsor

\$900

- ◆ 6 Tickets to the event
- ◆ Table sign with corporate logo
- ◆ Three-quarter page color ad in program book (7.5" wide by 7" tall)
- ◆ Verbal recognition from the podium
- ◆ Logo recognition during slide show
- ◆ Business name on the welcome banner
- ◆ Business name & link on Chamber website event page
- ◆ Business name recognition in Chamber newsletter and emails

## Keeper of the Keys Sponsor

\$600

- ◆ 4 tickets to the event
- ◆ Half-page color ad in the program book (7.5" wide by 5" tall)
- ◆ Verbal recognition from the podium
- ◆ Business name recognition during the slide show
- ◆ Business name on the welcome banner
- ◆ Business name & link on Chamber website event page
- ◆ Business name recognition in Chamber newsletter

## Gryffindor Student Sponsor

\$400

- ◆ 2 tickets to the event
- ◆ Quarter page color ad in the program book (3.25" wide by 5" tall)
- ◆ Verbal recognition from the podium
- ◆ Business name recognition during the slide show
- ◆ Business name on the welcome banner
- ◆ Business name on Chamber website event page
- ◆ Business name recognition in Chamber newsletter

This event features awards for outstanding individuals, social time, and an opportunity for members to share in the accomplishments of the past year and goals for the new year.

Choose level: Minister of Magic    Hogwarts Headmaster    Potions Professor    Keeper of the Keys    Gryffindor Student

Name of Sponsor: \_\_\_\_\_

Contact Name: \_\_\_\_\_ Phone Number: \_\_\_\_\_

Return this form to Lisa or contact her at: [lduckworth@richlandareachamber.com](mailto:lduckworth@richlandareachamber.com) Phone: (419) 522-3211

Ads are due to the Chamber by Friday, February 3<sup>th</sup> Send ads by email in PDF or JPG format to Angie at [afanello@richlandareachamber.com](mailto:afanello@richlandareachamber.com).

# Richland Area Chamber ATHENA Leadership Award Nomination

Awarded at Chamber Annual Meeting – February 15<sup>th</sup> *Sponsored by Park National Bank*



2022 Awardee  
DeLee Powell

The ATHENA Leadership Award is one that is given out nationally and internationally and is a well-known achievement which highlights a woman who is honored for professional excellence, community service and for actively assisting women in their attainment of professional excellence and leadership skills.

Each nominee must live or work in north central Ohio.

The deadline for application is **January 9, 2023**.

Typed information is requested – you are welcome to contact the Chamber for an electronic version. You may also include additional sheets if necessary.

## NOMINEE:

Name: \_\_\_\_\_

Title: \_\_\_\_\_ Company: \_\_\_\_\_

Business Address: \_\_\_\_\_

City: \_\_\_\_\_ State: \_\_\_\_\_ ZIP: \_\_\_\_\_

Work Phone: \_\_\_\_\_ Home Phone: \_\_\_\_\_ Email: \_\_\_\_\_

## NOMINATOR:

Name: \_\_\_\_\_ Title: \_\_\_\_\_

(Please Print)

Business/Company: \_\_\_\_\_

Phone Number \_\_\_\_\_ Email: \_\_\_\_\_

Nominator's Signature: \_\_\_\_\_

**DEMONSTRATES SUPPORT OF PROFESSIONAL WOMEN:** Provide specific example(s) of how the nominee has demonstrated support for the advancement of business and professional women.

---

---

---

**BUSINESS ACCOMPLISHMENTS:** List special recognitions, projects and achievements. Include business-related affiliations, directorships, trusteeships or other designations.

---

---

---



**COMMUNITY SERVICE:** Describe local, county and state level participation, length of service and offices held in civic and service organizations, charitable activities, political pursuits, religious groups, chambers of commerce, merchants' associations, etc.

---

---

---

**OTHER MEMBERSHIPS, ACHIEVEMENTS, AWARDS, PUBLICATIONS:** Nominees already may have been honored for service to their profession, industry or community. They also may have publications to their credit or articles published supporting their service to their profession, industry or community. Please list awards and honors received which support this nomination.

---

---

---

**ADDITIONAL INFORMATION PERTAINING TO CRITERIA:** Discuss briefly any other factors you believe are important for consideration of your nominee for the Athena Award.

---

---

---

## Previous ATHENA Award Recipients:

1989 Jeanne Alexander	2000 Carol Payton	2011 Betty Wells Preston
1990 JoAnn E. Dutton	2001 Barbara Pore	2012 Shirley Monica
1991 Gayle Gorman Freeman	2002 Vicki Kane	2013 Duana Patton
1992 Lydia Reid	2003 Mary Ann Nore	2014 Kathy Daniels
1993 Karen Moody Bierly	2004 Inez Shepherd	2015 Rebecca Toomey
1994 Suzanne Davis	2005 Pearl J. Peritalo	2016 Melanie Riggelman
1995 Deborah M. Schenk	2006 Chriss Harris	2017 Sally Gesouras
1996 Sandra Williams	2007 Carol Michaels	2018 Patti Kastelic
1997 Pamela Siegenthaler	2008 Joan Day	2019 Jodie A. Perry
1998 Charma Behnke	2009 Diana Coon	2020 Zoi Romanchuk
1999 Donna Valentine	2010 Deborah Adams	2021 Deanna West-Torrence
		2022 DeLee Powell

*Sponsored by:*



*Please return completed nomination form by January 9th, 2023, to*



Richland Area Chamber & Economic  
Development  
55 N. Mulberry Street, Mansfield, OH 44902  
Phone: 419-522-3211 Fax: 419-526-6853  
Email: [lduckworth@richlandareachamber.com](mailto:lduckworth@richlandareachamber.com)



## **2023 Economic Excellence Awards Nomination Form**

*Nominations are now being accepted for the 2023 Economic Excellence Awards. The awards are an opportunity to highlight businesses, individuals and organizations that have had significant impact on the growth and development of the local economy. Awards will be presented at the Richland Area Chamber and RCDG's Evening of Excellence at the Mid Ohio Conference Center on February 15, 2023.*

Name of Person Completing this Form: \_\_\_\_\_

Company \_\_\_\_\_

Phone \_\_\_\_\_ Email: \_\_\_\_\_

**Economic Impact Award(s):** Recognizes a person, business, or organization for their efforts in supporting economic, workforce, and/or community development in Richland County.

### **Nominee**

Name: \_\_\_\_\_

Address: \_\_\_\_\_

City: \_\_\_\_\_ State: \_\_\_\_\_ Zip: \_\_\_\_\_

Email: \_\_\_\_\_ Phone: \_\_\_\_\_

*Please complete the information listed above, selecting one award category per nomination. Nomination information is limited to two pages, may include photos and should include sufficient and specific information as to why this nominee is deserving of recognition for their contributions to the growth of Richland County's economy. Nominations must be received no later than Friday, January 20<sup>th</sup> and may be submitted via email to [lduckworth@richlandareachamber.com](mailto:lduckworth@richlandareachamber.com), fax at 419-526-6853 or mail at RCDG, 55 North Mulberry Street, Mansfield, Ohio 44902.*





*Thank you to our renewing members!*

## CATALYTIC LEADER / GOLD



## CATALYTIC LEADER / SILVER



## BOOST & EXCEL

First Federal Bank of Ohio  
Love's Travel Stops  
Niss Aviation FBO

Ohio Valley Manufacturing Inc  
Snow Trails  
Stream Management Group

## BUILD & GROW

Automatic Parts Inc.  
Baker's Collision Repair Specialists, Inc.  
BS Media Productions  
Buckeye State Credit Union  
Donley Ford of Shelby  
Earthworm Construction LLC  
Eberts Heating & Cooling  
Engwiller Properties Inc  
F.E. Krocka & Associates, Inc.

Freedom Caregivers  
Gandert Door Company Inc  
Industrial Technical Sales & Service  
Kleshinski Morrison & Morris, LLP  
Mansfield Brick & Supply  
Metal Conversions Ltd  
MG Energy, Inc.  
Moritz Concrete  
North Central Ohio Periodontics

Ontario Estates  
Primrose Retirement Communities  
Rinehart-Walters-Danner & Associates  
Southern Title of Ohio, Ltd.  
SSIP Insurance Partners  
Tarkowsky & Piper Co., LPA  
Tower Lakes Condominium Association  
Truck Sales & Service, Inc.

## ENGAGE & CONNECT

179th Airlift Wing  
Action Drain & Septic  
Appleseed Valley/Clearfork Veterinary Hospital  
Ashland Railway Inc  
B & B Drain Service  
B-Dry System of NCO Inc  
Beer's Automotive Services and Repair  
Bradley A Tilton  
BWS Enterprise LLC  
Carothers Pest Control LLC  
Cline Fire  
Community Health Access Project Inc  
Core Community Church  
Dunkin Jewelers Inc  
Edgar Trent Construction Company, LLC  
Edward Jones -Jeffrey W. Bail Financial Advisor  
Friendly Wholesale  
Gordon Flesch Company  
Goschinski Development Co LLC

Helen Brown CPA, LLC  
Houck Seed Company  
Jemm Property Management & Realty  
Jeremy Huff Excavation  
John F Aungst & Son Plastering, LLC  
Kingwood Center Gardens  
Lex Lanes  
LifePoint Community Church  
Mansfield Cemetery Association Inc  
Mansfield Graphics  
Mansfield Memorial Park  
Mansfield Playhouse  
Meadows Estate Apartments  
Mid-Ohio Plastic Surgery  
Mid-Ohio Youth Mentoring  
Mifflin Township  
Millstone Hills Golf Course  
Mound Agency of Ohio, Inc.  
Ohio Machine & Tool Co

Outback Steakhouse  
Phil Hicks Sweeping & Snow Plowing  
Richland County Foundation  
Rietschlin Construction, Inc.  
Robert J LeHew and Associates Inc  
Sauder Concrete Solutions, Ltd.  
Sluss Realty Company  
Spring Mill Furniture Barn  
St. Constantine's Helen Greek Orthodox Church  
Stoodt's Fresh Market  
The Clean Company  
The Old Franklin Church  
The Shelby Foundation  
Two Cousins Pizza Company  
Virgilio Tongson MD  
Walker Bros Co Inc  
Worner Veterinary Hospital

# UPCOMING CHAMBER EVENTS

Register for these events **HERE**  
or visit our event calendar at  
[www.richlandareachamber.com](http://www.richlandareachamber.com)

- 1/18 Women's Leadership Connection, 11:45a-1p @ DLX Kobacker Room
- 2/15 Annual Meeting @ Mid Ohio Conference Center
- 3/2 Business Boot Camp - Spotting Counterfeit Money & Credit Card Fraud in the Workplace, 7:30-9:00a @ the Chamber
- 3/22 Expo Eve Business After Hours
- 3/23 Business Expo 2023
- 4/26 Business Professionals Day Luncheon
- 4/27 EmployeeMEpalooza, 10am - 12pm @ MOESC
- 5/18-5/23 Leader Richland
- 6/23 Chamber Golf Classic at Deer Ridge Golf Club



**RNI INC.**  
RICHLAND NEWHOPE INDUSTRIES, INC.  
"WHERE QUALITY MATTERS"  
[WWW.RNIINC.COM](http://WWW.RNIINC.COM)  
419-774-4400

## eRecycling

Drop off times  
9am - 2pm  
Local pick-up available charges will apply

971 West Longview  
Mansfield, Ohio 44906  
Questions Call: 419.774.4437

Call for accepted materials  
and pricing list



## TRAINED EMPLOYEE OUTSOURCING

- Document Management
- Lawn and Ground Maintenance
- Wood Products
- Packaging
- Pallets
- Assembly
- Custodial Services
- Document Destruction



**419-522-0035**  
30 North Diamond (3rd floor City building)  
Mansfield, Ohio 44902  
Mon - Fri: 8am - 2pm  
Free Wi-Fi Inside  
[www.citygardencafe.org](http://www.citygardencafe.org)

# Element of Art

s t u d i o / g a l l e r y

96 North Main Street, Mansfield, Ohio 44902  
Phone: (419) 522-2965  
[www.eoastudiogallery.com](http://www.eoastudiogallery.com)



## THANK YOU TO OUR CATALYTIC LEADER INVESTORS



ADENA CORPORATION • CLEVELAND FINANCIAL GROUP • NANOGATE NORTH AMERICA LLC & JAY INDUSTRIES •  
MEDICAL MUTUAL • MILLIRON AUTO PARTS • PHILLIPS MANUFACTURING / SHELBY WELDED TUBE  
ALUMNI ROOFING CO • AVITA HEALTH SYSTEM • CLEVELAND CLINIC CANCER CENTER • EDGE PLASTICS •  
FIRSTENERGY CORP • HAMILTON INSURANCE GROUP, INC • HUNTINGTON NATIONAL BANK • KEYBANK •  
MAGNET • NEWMAN TECHNOLOGY • RV WHOLESALERS OF NORTHEAST OHIO • TEAM NEO