

RICHLAND AREA CHAMBER & ECONOMIC DEVELOPMENT

# CHAMBERLINK

JULY 2021



Caleb Keller, owner of Pathify, was a semifinalist for the 13th Annual Saunders Scholars National Competition hosted by the Young Entrepreneurs Academy (YEA!)



**CALLING ALL RESTAURANTS!**  
**Restaurant Week is September 13-17!**

*Sponsorships also available.*

**Register today!**

## STAFF

**Jodie A. Perry, CCE, IOM, CCEO-AP**  
President/CEO  
Phone extension 102

**Patrick Clinage**  
Executive Assistant & Sector  
Coordinator  
Phone extension 101

**Lisa Duckworth**  
Programs & Events Manager  
Phone extension 105

**Angie Fanello**  
Marketing & Communications  
Coordinator  
Phone extension 104

**Jessica Gribben**  
Economic Development Liaison  
Phone (419) 342-4159

**Kathy Fox**  
Front Office Coordinator

**Clint Knight**  
Workforce Development Director  
Phone extension 112

**Nikki Lewis**  
Chamber Foundation Manager  
Phone extension 103

**Barrett Thomas**  
Economic Development Director  
Phone extension 111

55 N. Mulberry St.  
Mansfield, OH 44902

Phone: (419) 522-3211

Fax: (419) 526-6853

[info@richlandareachamber.com](mailto:info@richlandareachamber.com)

## Letter from Jodie

### Be Our Guest

Events are back! Events are back!

The very first email I had to send in the COVID-era was to announce the cancellation of the Business Expo, and that ended up being just the beginning of a rush of cancellations in 2020. It took some adjustment to learn to operate in a world without events. How would people network? How would people learn? How would businesses promote themselves? Well, we adapted, you adapted and we made it through the ensuing 18 months.

Something was missing, however, the connections we make! Whether it was just an informal chat after a meeting, or shaking hands at a Business After Hours, as month after month passed I quickly figured out...I missed people! I was not sure what this year would bring, but by the end of first quarter I grew cautiously optimistic that we may be able to start planning and holding events again.

We started small with some smaller networking events (Networking at Noon, Lunchwise Wednesday), then held the Chamber Golf Outing. This month will see the return of Business After Hours (July 22<sup>nd</sup> at The Ohio State Reformatory), and more events are quickly following that such as the 2<sup>nd</sup> Annual Workforce Summit, an in-person Job Fair (EmployaPalooza), and our Member Appreciation Luncheon.

The second half of 2021 is gearing up to be busy once again! I hope that you will spend some time reading each newsletter to figure out what might make sense for you to participate in. I know for myself that I am having to replan my schedule a bit after taking so many months without as much happening locally. Here is a good primer on some of our upcoming activities and how they might help you & your business:

- **Looking to make new connections?** Think about Business After Hours, Networking at Noon, Lunchwise Wednesday Women's Networking, Member Appreciation Luncheon
- **Looking to learn new skills & topics?** Watch out for our Business Boot Camp series, the Workforce Summit, our new Lunch & Learn series, the Regional Economic Forum and more.
- **Looking to hire new employees?** Don't miss our in-person Job Fair – EmployaPalooza – coming in August!
- **Looking to stay up to date on legislative action?** Watch for our Eggs & Issues, Legislative Luncheons and the Legislative Reception which will be returning soon.

In short, I can almost guarantee that there is an event that can help your business. If you are still wondering which one makes sense for you, feel free to drop me a line or call our Events Manager – Lisa Duckworth for more details. We look forward to SEEING you soon! Onward!



Jodie A. Perry, CCE, IOM, CCEO-AP  
President & CEO  
Richland Area Chamber & Economic Development





## New Bike Trail Signage Uses QR Codes to Point to Local Amenities

Richland County Regional Planning has unfurled The B&O Community Project, a new wayfinding campaign, onto the B&O Trail. Eighteen signs dot the trail and its surrounding communities of Bellville, Butler, Lexington, and Mansfield, providing step-by-step directions to tour the areas and locate nearby businesses, services, and parks. The signs contain information about the destination, its distance in walking or cycling time, and a scan-able QR code which sends smart phone users to Google Maps directions. In the event that the route is unavailable, the code will instead direct users to pertinent information. The QR codes don't require a special app; simply opening a phone's camera and pointing it at the sign will scan the information.



The project doesn't aim to endorse or bolster any specific businesses, but rather to bring connectivity between users of the trail and denizens of Bellville, Butler, Lexington, and Mansfield. Destinations and tours are kept within a reasonable distance of start points, so trail goers should expect to walk or cycle no more than twenty minutes to explore amenities. The first run of signs, as a pilot program, are scheduled to last two years. For more information or questions, please contact Ricky Mitchell at Richland County Regional Planning / 419.774.5968 ext. 7873 or [rmitchell@rcrpc.org](mailto:rmitchell@rcrpc.org).

## Working from home since 1886.

As its only independent bank (and long-long-long-time resident), we're proud to call Richland County home, and the people here, family.

So, stop by any time for financial support, services, or just some friendly (family) advice.



**Mechanics**  
BANK Member FDIC



### Your Commercial Aluminum Door & Storefront Specialist

New Construction – Replacement – Service

- Aluminum Storefront Entrances
- ADA Automatic Door Openers
- Service & Repair
- Custom Shower Doors
- Glass Replacement
- Mirrors

Call us for all your glass & door needs!

419-775-6552

[www.allglass-systems.com](http://www.allglass-systems.com)

# Fight The Bite Richland!

Stop disease-carrying  
mosquitoes before  
they breed.

***Find out how.***



Prevent or remove  
ticks before they  
can pass on diseases.

***Find out how.***



**[www.richlandhealth.org](http://www.richlandhealth.org)**

**Type "Mosquitoes" or "Ticks" in the search box.**





## BUSINESS AFTER HOURS IS BACK!

Thursday, July 22nd | 5:00pm 7:00pm

Ohio State Reformatory, 100 Reformatory Rd., Mansfield

Please join us for a fun night of networking at the historic Ohio State Reformatory. The Village Catering has some wonderful appetizers planned and you can enjoy a drink in what was once the prisoner visitation area!

**BONUS!** Come early for a 30 minute, guided tour of the Cell Block! **There will only be one tour, starting at 4:45 pm, so don't be late!**

Located right in our own backyard, The Ohio State Reformatory is a historic prison built between 1886 and 1910 and remained in operation until 1990. Stroll the halls and visit the cells of some of history's toughest criminals. See the site of the famous movies, The Shawshank Redemption and Air Force One. Whether you're reliving scenes from classic films, hunting for the paranormal, or taking in the beautiful architecture, take a walk through history at The Ohio State Reformatory!



**COST: FREE for Chamber members if RSVP is received by the end of business on July 19 (\$5.00 if registration is received after this date).**

**Non-members are welcome to attend at \$5.00/person.**

Is this your first Business After Hours? Join us for a New Member Mixer a half hour before the event starts, hosted by the Chamber Ambassadors.

**REGISTER**

### THREE WAYS TO REGISTER:

- 1) Use our events calendar at [www.richlandareachamber.com](http://www.richlandareachamber.com)
- 2) Call us at 419-522-3211
- 3) Email Lisa Duckworth at: [lduckworth@richlandareachamber.com](mailto:lduckworth@richlandareachamber.com)

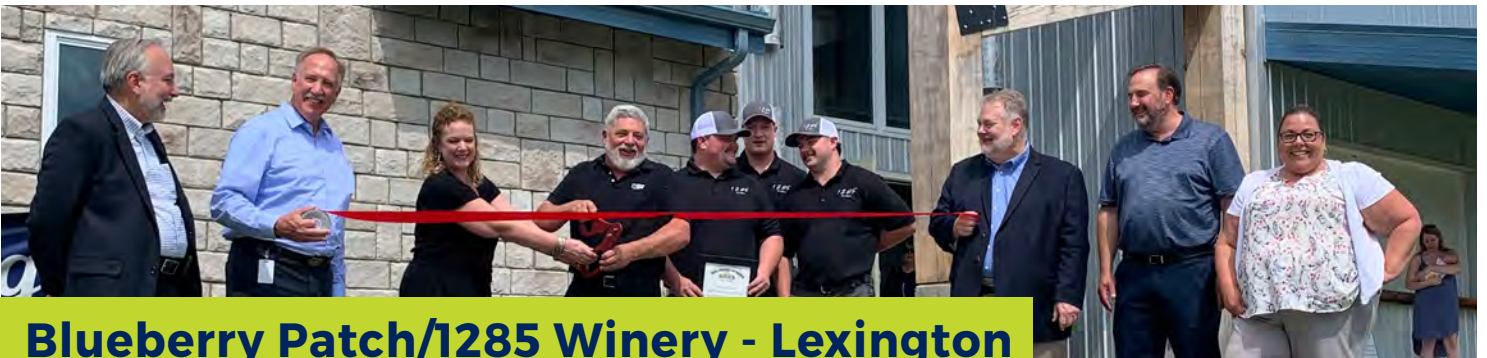




# RIBBON CUTTINGS



**Olive & Oak - Mansfield**



**Blueberry Patch/1285 Winery - Lexington**



**RYP Sponsors Art - Downtown Mansfield**



**Painted Cowgirl Expansion - Greenwich**





## The official health insurer of **entrepreneurs**

---

You put everything you have into your business. And we put everything into creating high-quality health insurance plans for you and your employees. We've partnered with the Richland Area Chamber of Commerce and Council of Smaller Enterprises (COSE) to offer a unique benefit option for small businesses like yours. The multiple employer welfare arrangement (MEWA) allows small businesses of 1–50 to join together to share costs and combine risk. This offers rate stability, savings and the same great health benefits that large corporations have. Bundle your health plan with our dental, vision or life plans for a fully integrated benefits package.

**Contact your broker | [MedMutual.com/Richland](https://www.MedMutual.com/Richland)**



**MEDICAL MUTUAL®**

Health | Dental | Vision | Life

# Congratulations to the Leadership Unlimited Class of 2020



Over 38 years later, 1000+ graduates and LU continues to go strong. Thank you to the LU Class of 2020 for the investment in their development, their patience with the program and determination to complete their program year. We cannot wait to see the impact you all will make in our community.

Congratulations to our graduates:

- Kelly Blankenship - Harmony House
- Rachel Brumenschenkel - Compass
- Holly Christie - Mansfield City Schools
- Chris Clark - OhioHealth Hospitals
- Candace Coffman - Nationwide Children's Hospital
- Bo Evans - MTD Products
- Dennis Fox - ES Consulting
- Jennifer Fry - The Ohio State University-Mansfield
- Jill Haring - Haring Realty
- Christian Harris - Park National Bank
- Hannah Jarvis - Spherion Mid Ohio
- Kristi Lord - Mechanics Bank
- Kevyn Morehead - Richland Newhope Industries, Inc.
- Ashley Nash - Park National Bank
- Larry Phillips - Richland Source
- Tammy Rearic - Gorman-Rupp Company
- Nichole Rogers - Directions Credit Union
- Erich Schroeder - J&B Acoustical
- Melissa Shannon - Stanley Black & Decker
- Kelly Shifflet - 179th Airlift Wing Command
- Matthew Stanfield - FiELD9: architecture
- Eric Stigall - Westbrook Country Club
- Jamie Starkey - Catalyst Life Services
- Edwin Tharp - Lorain Metropolitan Housing Authority
- Michael Thoma - Kimball Midwest/Mid Ohio Youth Mentoring
- Mindi White - A&W Rootbeer Stand
- Rodney Willis - Richland Newhope
- Jordon Wurthmann - Purdy Construction
- Stephanie Zader - eXp Realty-The Stephanie Zader Team/Mansfield City Council

# Congratulations!





# YEA! is Accepting Applications

We are currently accepting applications for the 2021-22 program year. Applications can be found at [www.yeausa.org](http://www.yeausa.org) or by contacting the Chamber office. This summer we have planned multiple virtual and in-person information sessions so you and your families can learn more about this wonderful program. Each session will take place either via Zoom or at the Chamber office from 6:00-7:00 pm.

The dates for each session are:

Thursday, August 19th - Virtual

Thursday, September 2nd - In-Person

Tuesday, September 7th - Virtual



If you are interested in attending any of the sessions, please register by contacting Nikki Lewis, Program Manager. Email: [nlewis@richlandareachamber.com](mailto:nlewis@richlandareachamber.com) or Phone: (419) 522-3211

Follow us on Facebook and Instagram at YEA Richland.

*Richland Area Chamber &  
Economic Development*

# MEMBER APPRECIATION LUNCH

Friday Aug 20, 2021  
11:00am - 1:30pm



Join us at the Chamber building located at 55 N. Mulberry Street in Mansfield



**RICHLAND AREA  
CHAMBER**  
& ECONOMIC DEVELOPMENT

*Strong Business.  
Strong Community.*



**Thank you to Medical Mutual  
for your support of this event!**



**There is NO COST to attend but please RSVP by August 16th for food count purposes to:  
lduckworth@richlandareachamber.com phone: 419-522-3211 fax: 419-526-6853**

Company \_\_\_\_\_

Names & Emails of Attendees:

Name: \_\_\_\_\_

Email: \_\_\_\_\_

Name: \_\_\_\_\_

Email: \_\_\_\_\_

Name: \_\_\_\_\_

Email: \_\_\_\_\_

Name: \_\_\_\_\_

Email: \_\_\_\_\_

Name: \_\_\_\_\_

Email: \_\_\_\_\_

**Please RSVP no later than August 16**

**Where:  
Chamber office, located at 55 N. Mulberry Street, Mansfield**



**Thank you for your  
support of the  
Chamber and the  
community!**





# CONNECT WITH YOUR COMMUNITY!

## Lunch WISE Wednesday

### Assets - Starting from Scarcity or Abundance

Presented by Deanna West-Torrence, Founder and Executive Director, NECIC

When: **Wednesday, July 21st | 11:45am - 1:00pm**  
(lunch is served at 11:45am, program begins at 12pm)

Where: **DLX Kobacker Room** 28 N. Main St, Mansfield

Cost: \$15 (lunch included!)

**REGISTER**



Mark your calendar for the 3rd Wednesday of each month to join a group of dynamic, innovative local women for a time of powerful networking and motivation, as well as a chance to learn more about your community. This collaborative series exclusively for women is being co-hosted by the Richland Area Chamber and the Small Business Development Center at Ashland University.



A longtime resident, Deanna West-Torrence found herself returning to the North End neighborhood throughout her life.

Through the years, Deanna worked in many ways to better the community, from working with CHAP (Community Health Access Project), representing the 5th Ward on Mansfield City Council, serving on the Mansfield City School Board, and leading the Neighborhood Youth Corps, as well as serving on other boards, task forces, and advisory committees.

In 2007, Deanna and other residents and community leaders applied their collective experience and founded the North End Community Improvement Collaborative (NECIC). NECIC's mission is to improve the quality of life and economic landscape of the North End Community. Deanna is the proud mother of three adult sons and an adult daughter.

## FRI-YAY!

Topic: **Kingwood Center Gardens**

When: **Friday, July 23rd | 12:00 - 12:30pm**

Where: **Facebook Live**

Cost: **FREE for Chamber members**

**REGISTER**



So many exciting things are happening in Richland County! Join us in our new series, Fri-Yay!, where we will celebrate good news in our community. You won't want to miss these 30 minute, monthly updates on the fourth Friday of each month at noon. We'll hear about the great things happening right where we live and work. There is no charge and you can simply join in on Facebook Live on the [Richland Area Chamber & Economic Development page](#). Like and share the event while it is live for a chance to win a gift card!

## Networking at Noon

When: **Friday, July 9th | 12:00pm - 1:00pm**

Where: **Royalwood Caterers at the Life Celebration Center**  
117 S. Main St. Mansfield

Cost: **\$15 / members \$25 / non-members**  
(lunch included!)

**REGISTER**



Could you benefit from building more professional relationships? Is it important for you to meet prospective clients? Do you need to stay on top of the latest industry trends? Networking at Noon the answer! Networking allows you access to opportunities you might not be able to find on your own and is important for establishing mutually beneficial connections with other professionals in our community. If these are things that interest you, join us for Networking at Noon!

Sponsored by:



**THREE WAYS TO  
REGISTER:**

- 1) Use our events calendar at [www.richlandareachamber.com](http://www.richlandareachamber.com)
- 2) Call us at 419-522-3211
- 3) Email Lisa Duckworth at [lduckworth@richlandareachamber.com](mailto:lduckworth@richlandareachamber.com)



## Clint Knight

Director of Workforce Development  
Richland Area Chamber & Economic Development  
Phone: 419-522-3211  
Email: [cknight@chooserichland.com](mailto:cknight@chooserichland.com)



## EMPLOYAPALOOZA

**AUGUST 21st 10am - 1pm**

**Mid Ohio Conference Center**



On August 21st from 10am to 1pm, The Richland Area Chamber and Economic Development, in partnership with Ohio Means Jobs Richland County will host "Employapalooza" at the Mid Ohio Conference Center. This event is the latest version of our regional job fair that has traditionally been held each Spring. This will be a first of it's kind for Richland County - serving as a Celebration of New Beginnings, New Opportunities, and Recovery. Participating employers are encouraged to begin thinking about how you can make your space at this event an uplifting and exciting experience. We will be giving awards for "Most Interactive", "Most Creative", and "Most Festive" employer booths. Register for your spot today at [www.chooserichland.com](http://www.chooserichland.com)

**REGISTER**



## 2nd Annual Workforce Summit

**August 2nd 11am to 1:30pm**

**Mid Ohio Conference Center**

The Richland County Workforce Summit is the place for business and education leaders to network, partner, and develop opportunities for students to explore workforce pathways.

We will be discussing work based learning and how it creates a forum for new ideas and partnerships. Hear about the new Work Based Learning pathway to graduation, and how it can lead young people towards skills and habits that ensure their success in the workplace. This can lead to young people being more prepared to directly enter the workforce when they graduate from school.

Special Keynote Speaker, Richie Contartesi will be speaking about the importance of being a leader by pioneering outside the box educational practices. He's spoken to over 450 schools, and works to help adults understand the younger generation, and help the younger generation understand themselves.



**REGISTER**





## **NEW SKILLS MATCH TOOL ON OHIOMEANSJOBS.COM NOW AVAILABLE**

The new **Skills Match** tool is an innovative resource on OhioMeansJobs.com that links Ohio job seekers with potential employment opportunities through the information provided on their resume.

"SkillsMatch" is match-making application that connects people seeking work to businesses that are hiring. Supported by detailed data on the newly redesigned OhioMeansJobs website, this unique resource extracts job seekers' skills from their resumes and links them to a job-match recommendation based on those skills.

The easy-to-use resource allows job seekers to directly upload their resume to OhioMeansJobs.com, select the skills on their resume that they'd like matched with potential job opportunities, and watch in real-time as the tool displays which skills line up with a particular job posting. Additionally, SkillsMatch will show job seekers which skills are missing from their resume based on keywords in job postings on the site, giving them the opportunity to improve and update their resume so they can have a better chance of matching with the kind of position they are seeking.

---

## **Looking for local workforce talent?**



### **Introducing Community Opportunity - Build Your FREE Business Profile Today!**

Community Opportunity is a free comprehensive resource for students, job seekers, and area businesses alike to connect, network, and find/share employment opportunities within our community.

You will have access to local job seekers' resumes, and you'll also increase your organization's visibility and community engagement at no cost to you. To build your profile, visit [www.communityopportunity.com](http://www.communityopportunity.com) and click "Company Registration".

Questions? Contact Clint Knight, Director of Workforce Development at the Richland Area Chamber & Economic Development at 419-522-3211 or email [cknight@chooserichland.com](mailto:cknight@chooserichland.com)



## Richland Area Chamber & Economic Development 2021 Small Business of the Year Awards Nomination

To be considered for the Richland Area Chamber & Economic Development Small Business of the Year Awards, the nominated business must:

- Be headquartered in Richland County
- Employ 250 or fewer full-time equivalent employees
- In operation for at least three years
- Have annual sales revenue of less than \$20,000,000
- Demonstrate an active concern for the community

**Eligible applicants will be judged on the following:**

- Business History & Performance
- Staff Training & Motivation
- Community Involvement
- Customer Service
- Business Strategies & Goals

To be considered for the Richland Area Chamber Small **Non-Profit** of the Year Award, the nominated organization must:

- Be headquartered in Richland County
- Total budget \$1M or less
- In operation for at least three years
- Must be a 501c3 organization

**Eligible applicants will be judged on the following:**

- Collaboration with other organizations
- Employee Practices
- Financial Performance (diversification, income streams, rainy day fund, etc).
- Customer Service
- Strategic Planning - long range

Business Nominated	
Contact Person/Title	
Address	
Phone	
email	Fax (if available)

Nominator's Name
email

Why do you think this business should be selected? (include extra page if needed)

Email nominations to Lisa Duckworth at [lduckworth@richlandareachamber.com](mailto:lduckworth@richlandareachamber.com) or drop off/mail to the Richland Area Chamber at 55 N. Mulberry St, Mansfield, OH 44902.

**Questions?** Contact the Chamber at 419-522-3211 or email Lisa at [lduckworth@richlandareachamber.com](mailto:lduckworth@richlandareachamber.com)

Submit nomination by **September 1st, 2021**



*Thank you to our renewing members!*

## CATALYTIC LEADER / PLATINUM



## CATALYTIC LEADER / SILVER



## SHAPE & THRIVE

City of Mansfield

Cleveland Clinic Cancer Center

## BOOST & EXCEL

Der Dutchman Restaurant

TE Connectivity

Wm Dauch Concrete Co

## BUILD & GROW

E S Beveridge & Associates Inc

Eagle Mark 4 Equipment Co.

First English Lutheran Church Early Learning Center

Innovision Automation

Mansfield Motor Group

Metronome Music, Inc.

Metzger-Gleisinger Mechanical Inc

Richland Lumber Inc

Shelby Printing, LLC

Shine FM Ohio

The Waterford at Mansfield

Travelodge

Vector Security

Wallington & Bauer

WOB Accountants and Advisors

## ENGAGE & CONNECT

AAA-Ohio Auto Club

Advantage Marketing Inc

Callahan Door & Window

City Grille

Clearfork Consulting, Ltd.

Comfort Care Home Health Services

Cosam Contracting Inc

Haring Realty

Health Insurance Options

Herlihy Funeral Home

JC Elgin Co., LPA

Johnny's Mattress & Furniture SuperStore

Kimble Septic & Porta-Pot Inc

Love In the Name of Christ of Greater Mansfield

Mansfield Christian School

Mansfield Fuel & Food

Marvin Memorial Library

Matt Quinn & Company

Milark Industries

Miss Ohio Scholarship Program

Oak Park Tavern & Restaurant

Pioneer Career & Technology Center

RB Print Shop, Inc.

Renaissance Performing Arts

Richland County Ohio Sheriff

Richland Public Health

Sallie's Wholesale Supply

Snyder Funeral Homes Inc

Spire Advertising & Web Design

Think-Ability Rehab Services

Third Street Family Health Services - Medical

UMADAOP of Mansfield

Vans Tire Pros of Mansfield

# The Chamber is hiring!

## Do you know someone who would be great fit for the Chamber Team?

We have two open positions for which we are currently accepting resumes. See each listing below and please help us spread the word by sharing it with your friends and connections. We are excited to be expanding our team to better serve you.

### Member Services Coordinator

The Richland Area Chamber & Economic Development is seeking a full-time Member Services Coordinator. This position is the key staff member working with current and prospective members, managing member benefits, maintaining our member database, and organizing the Chamber Ambassadors committee. Additionally, they work with other Chamber committees, assist with events, coordinate ribbon cuttings, as well as handle the front office duties.

The ideal candidate is a motivated and customer-focused team player who has demonstrated effective leadership for project management. They will be personable, outgoing, and determined; be an open-minded problem solver; and have excellent communication and relationship-building skills. They should be a self-starter with proven ability to meet goals.

### Director of Marketing & Communications

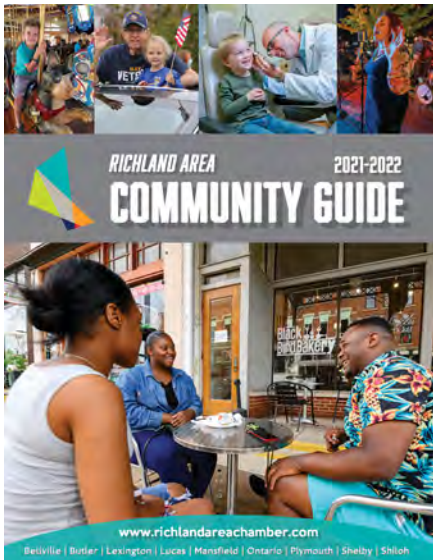
The Richland Area Chamber & Economic Development is seeking a full-time Marketing & Communications Director. This is a new position within the organization and will work with our existing part-time marketing staff member.

The Marketing & Communications Director is an entrepreneurial individual who will lead and manage a comprehensive marketing and communications strategy for our organization. This strategy will include marketing for economic development and talent attraction and will incorporate the new community brand currently being developed. The Director will oversee the Marketing & Communications Coordinator who handles much of the day-to-day Chamber program & event marketing. The Director will be the lead digital marketing strategist and ensure that our organization is fully represented in the digital space and lead our public relations efforts with the media.

The position reports to the President & CEO and will work closely with other staff members and community leaders. They will work with key stakeholders including business people, elected officials, public sector employees, non-profit leaders, and other members of the community to meet the strategic goals of the organization.

The ideal candidate is a motivated and customer-focused team player who has demonstrated effective leadership for project management, marketing and strategy. They will be personable, outgoing, and determined; be an open-minded problem solver; and have excellent communication and relationship-building skills. They should be a self-starter with proven ability to meet goals. Candidates should possess an Associate's or Bachelor's degree in a related field, as well as at least 3-5 years' experience in marketing/communications. Salary is commensurate with experience.

**Interested candidates for these positions should email a resume and cover letter to Chamber President/CEO Jodie Perry at [jperry@richlandareachamber.com](mailto:jperry@richlandareachamber.com).**



## Community Guides Have Arrived!

### Do you need more copies?

**Hopefully you received four copies through the mail, but if you are in a high traffic location or need a larger amount of guides for any reason, please let us know!**

Once again, this guide has been updated to include useful information about our local community and it's a great way to promote our Chamber members! We encourage you to use this guide and share copies with your customers, staff, family and friends - even display in your waiting area!

If you would like more guides, please contact the Chamber at 419-522-3211.



## Team NEO is proud to support the Richland Area Chamber & Economic Development

Team NEO engages with Richland County and all 18 counties of the Northeast Ohio Region – because **together**, we build a more vibrant regional economy; one that is more **talented, equitable, competitive, innovative, resilient** and **prosperous**.



Team**neo**

JobsOhio  
Network Partner  
\*\*\*\*\*



[teamneo.org](http://teamneo.org)



Thank you to everyone who participated in the Chamber Golf Classic at Westbrook Country Club on June 11.

We dodged the rain and had a wonderful day!

*Presented by*



**OhioHealth**

*Award  
Recipients*

Below are the results from the day - congratulations to all the prize winners!

**Gross Scramble - Madison Adult Career Center** - Robert Peterson, Cory Peterson, Mitchel McFarland, Kaleb, Smith

**Net Handicap Scramble winners:**

1st - **Donley Ford of Shelby** - Aaron Sponsler, Bryant Kucera, Tom Hoak, Joel Tanner

2nd - **Freightwatch** - Jon Kastran, Grayson Pittman, Josh Leady, Duncan McFarlane

3rd - **Mechanics Bank** - Dakota Durbin, Nick Gesouras, Taylor Bogner, Jason Painley

Skins winners were **First Federal Community Bank** (Eagle on 14) and **Jamison Well Drilling Team 2** (Eagle on 5)

Proximity Contests Winners:

Hole 2, Closest to the pin was **Robert Peterson**

Hole 5, Men's Longest Drive was **Mitchel McFarland**

Hole 5, Women's Longest Drive was **Michele Giess**

Hole 7, Closet to the pin was **Anastasia Stumpf**

Hole 8, Closet to the pin 3rd shot was **Cory Peterson**

Hole 10, Women's Closest to the pin was **Jessi Ganson**

Hole 15, Closest to the pin 2nd Shot was **Kaleb Smith**

The Mansfield/Richland Area Education Foundation 50/50 raffle raised \$610 for YEA! *Thank you golfers!*

Our **Best Dressed team** was **K E McCartney & Associates Inc.** We hope they wear these same outfits to our Luau themed Member Appreciation Lunch in August!



THANK YOU to all our golfers, sponsors, prize contributors, and volunteers for making this event possible. This is one of our most popular events - thanks to you!

Special thanks to our friends at **Westbrook Country Club** for doing such a phenomenal job to keep things safe and fun on your beautiful course.



# THANK YOU TO OUR 30<sup>th</sup> ANNUAL GOLF CLASSIC SPONSORS

## Presented by



## Golf Gift Sponsor



## Tee-Off Tipple Bar Sponsor



## Premier Sponsors



## Hole in One Sponsor



## Golf Ball Sponsor



## Breakfast Sponsors



## Lunch Sponsors



## Beverage Cart Sponsors

Carothers Pest Control LLC | Debt Recovery Solutions of Ohio | Directions Credit Union

MT Business Technologies | MTD Products Corp | Staffing Partners

## Proximity Contest Sponsors

Alumni Roofing Co | Medical Mutual | Pinnacle Wealth Planning Services, Inc.

## Hole/Tee Sponsors

Cooper Enterprises Inc | JAG Healthcare | Mechanics Bank | Mid-State Multimedia Group | North Central State College

PR Machine Works Inc | Rinehart-Walters-Danner & Associates | Slick Automated Solutions | Spire Advertising & Web Design

# UPCOMING EVENTS

## Lunch & Learn - How to Save Money and Time with Story-Based Marketing in Any Industry (select one session or all three)

Why story is the most powerful tool in marketing + How to use story to attract more customers for ANY INDUSTRY (session 1- Sept. 9)

How to build a sales funnel that grows your business (session 2 - Sept. 16)

How to apply a story-based approach to advertising (session 3 - Sept. 23)

See inside this newsletter for more information on the above events or visit the event calendar at [www.richlandareachamber.com](http://www.richlandareachamber.com)

July 9	Networking at Noon (11:45a) Royalwood Caterers/Life Celebration Center
July 21	Lunch WISE Wednesday Luncheon (11:45a) @ DLX
July 22	Business After Hours (5-7p) @ Historic Ohio State Reformatory
July 23	FRI-YAY! - Facebook Live (12p) from Kingwood Center Gardens
Aug 2	Workforce Summit (10:45-1:30) @ Mid-Ohio Educ. Service Center
Aug 19	Business After Hours (5-7p) @ The New Store
Aug 20	Member Appreciation Lunch (11a) @ the Chamber
Aug 21	Employapalooza (10a-1p) @ Mid-Ohio Educ. Service Center
Sept 13-17	Restuarant Week
Sept 16	Business After Hours (5-7p) @ Ohio Bird Sanctuary
Oct 1	Regional Economic Forum (12-4p) @ Snow Trails
Oct 26	Savor & Sip (5-8p) @ Mid-Ohio Educ. Service Center
Dec 3	Small Business of the Year Awards



**RNI INC.**  
RICHLAND NEWHOPE INDUSTRIES, INC.  
"WHERE QUALITY MATTERS"  
[WWW.RNIINC.COM](http://WWW.RNIINC.COM)  
419-774-4400

**eRecycling**  
Drop off times  
9am - 2pm  
Local pick-up available charges will apply

971 West Longview  
Mansfield, Ohio 44906  
Questions Call: 419.774.4437

Call for accepted materials  
and pricing list





**City Garden Cafe**  
419-522-0035  
30 North Diamond (3rd floor City building)  
Mansfield, Ohio 44902  
Mon - Fri: 7am - 3:30pm  
Free Wi-Fi Inside  
[www.citygardencafe.org](http://www.citygardencafe.org)

**TRAINED EMPLOYEE OUTSOURCING**

- Document Management
- Lawn and Ground Maintenance
- Wood Products
- Packaging
- Pallets
- Assembly
- Custodial Services
- Document Destruction

**Element of Art**



s t u d i o / g a l l e r y  
96 North Main Street, Mansfield, Ohio 44902  
Phone: (419) 522-2965  
[www.eoastudiogallery.com](http://www.eoastudiogallery.com)

## THANK YOU TO OUR CATALYTIC LEADER INVESTORS

**Cleveland**  
Financial Group  
Charles P. Hahn, CFP®



ADENA CORPORATION • NANOGATE NORTH AMERICA LLC & JAY INDUSTRIES • MEDICAL MUTUAL •  
MILLIRON AUTO PARTS • PHILLIPS MANUFACTURING / SHELBY WELDED TUBE  
AVITA HEALTH SYSTEM • EDGE PLASTICS • FIRSTENERGY CORP • HAMILTON INSURANCE GROUP, INC. •  
HUNTINGTON NATIONAL BANK • NEWMAN TECHNOLOGY • TEAM NEO