

RICHLAND AREA CHAMBER & ECONOMIC DEVELOPMENT

# CHAMBERLINK

JUNE 2021



Secretary of State Frank LaRose visits with the Chamber

## STAFF

**Jodie A. Perry, CCE, IOM, CCEO-AP**

President/CEO

Phone extension 102

**Patrick Clinage**

Executive Assistant & Sector  
Coordinator

Phone extension 101

**Lisa Duckworth**

Programs & Events Manager  
Phone extension 105

**Angie Fanello**

Marketing & Communications  
Coordinator

Phone extension 104

**Jessica Gribben**

Economic Development Liaison  
Phone (419) 342-4159

**Kathy Fox**

Front Office Coordinator

**Clint Knight**

Workforce Development Director  
Phone extension 112

**Nikki Lewis**

Chamber Foundation Manager  
Phone extension 103

**Ashley Meyer**

Member Services Coordinator  
Phone extension 110

**Barrett Thomas**

Economic Development Director  
Phone extension 111

55 N. Mulberry St.

Mansfield, OH 44902

Phone: (419) 522-3211

Fax: (419) 526-6853

info@richlandareachamber.com

## Letter from Jodie

### What's Up Next?

As we navigate these post-pandemic waters, we are all trying to figure out what comes next? I have written a little bit about the community in past columns so I thought this month I might share my thoughts on what comes next for the Chamber.

For the rest of 2021, you will see us bringing back some of our more popular events – Business After Hours, Lunchwise Wednesday, and hopefully Savor & Sip. You may also see us experimenting with other types of events. Since we had to turn the dial down on everything over the last year, it really presents and opportunity to rethink some of our programming to see if there might be things that would better meet the needs of our members. Do you have some ideas on what you would like to see? Drop me a line, I would love to hear from you.

We will also be engaging in a new strategic planning process. It has been 4 years since we launched our last plan and it is time to start fresh. This should have happened last year, but we decided to wait until we could be in person for the planning. I love strategic planning and taking the time to map out the big picture goals for our organization. We made a lot of progress during our last plan, but we know that the needs of the business community and the community at large have changed. As members, you will have some opportunities to weigh in on where you would like to see us spending time.

We are also re-engaging the community branding process that we started back in 2019 with our partners at Destination Mansfield and many others. We were on the verge of the 'community exploration' process with our consultants when the



## Working from home since 1886.

As its only independent bank (and long-long-long-time resident), we're proud to call Richland County home, and the people here, family.

So, stop by any time for financial support, services, or just some friendly (family) advice.



**Mechanics**  
BANK Member FDIC

pandemic hit. After debating a wholly virtual process, we opted to wait for a time when they could be here in person...and that's happening this summer. I am excited to get this project moving once again so we can all up our game when it comes to promoting our area.

Our economic & workforce development work promises to stay extremely busy. We are participating in another round of the SiteOhio process, pitching for projects looking for locations, and visiting existing companies to see how we can help them to expand. Workforce is a particular pain point for everyone right now. In the short-term we are working on an adult Job Fair in mid-August, so watch for more on that soon. We are also talking about more long-term projects around developing pipelines of future talent for employers.

The Chamber Foundation is relaunching Leadership Unlimited this fall (yay!) and has a completely full class. This core program was missed last year and promises to once again better connect participants with our community. The Young Entrepreneurs Academy is also recruiting for their 7th class. Please help us reach middle & high school students who are interested in starting their own businesses. This is a phenomenal program in which to take part.

Our advocacy work is also going to stay busy. We are working with our local government partners to look at spending on the ARPA dollars. We are also encouraging investment in infrastructure (though are closely watching the details on what goes into the final bill). And of course, we are actively involved with working to support the 179th Airlift Wing. There are a lot of other items that we're watching when it comes to advocacy. I could continue, but I think you get the picture that we are planning to stay very busy here at the Chamber. Mostly, we are looking forward to seeing you all in person again. While I am proud of the way we were able to continue to serve you 100% during the pandemic, I speak for our whole team when I say we missed seeing so many of you. I hope you will take some time to drop into an upcoming event soon! Thanks for all you are doing to help our community rebound!



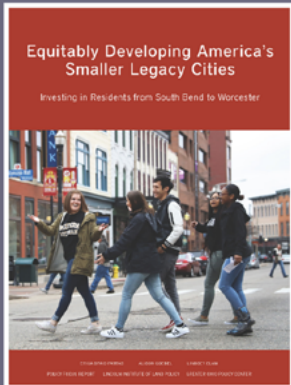
Jodie A. Perry, CCE, IOM, CCEO-AP  
President & CEO  
Richland Area Chamber & Economic Development

## Mansfield & Richland County Included in New National Report

Former industrial and manufacturing hubs like Dayton, Ohio, and Gary, Indiana—known as legacy cities—need not choose between economic growth and equity, as growth is most durable when it benefits everyone, according to a new Policy Focus Report and accompanying Policy Brief published by the Lincoln Institute of Land Policy in partnership with the Greater Ohio Policy Center. Legacy cities can promote long-term growth while addressing racial and economic inequities laid bare by COVID-19 using strategies mapped out in *Equitably Developing Smaller Legacy Cities: Investing in Residents from South Bend to Worcester*. Using case studies of successful initiatives, the report guides practitioners through equitable investment in both physical projects and people.

A new report from the Lincoln Institute of Land Policy and Greater Ohio Policy Center shows how former industrial and manufacturing hubs can simultaneously promote long-term economic growth and address racial and economic inequities laid bare by COVID-19. The authors outline seven strategies, illustrated with a diverse set of case studies, that can lay the groundwork for a city's equitable development agenda. Strategies are tailored to the unique challenges of these small to midsize legacy cities and also draw on their unique opportunities—such as a lack of market pressures that allows leaders more time to get plans right.

The report highlights the collaborative work done to respond to the COVID-19 crisis by the Regional Manufacturers Coalition and the Richland Area Chamber & Economic Development to conduct timely calls with the manufacturing community (page 50). The report is free to download and [can be found here](#) on the Greater Ohio Policy Center website.



**New Report:**  
**Equitably  
Developing  
America's Smaller  
Legacy Cities**

75 YEARS  
LINCOLN INSTITUTE  
OF LAND POLICY

GREATER OHIO  
POLICY CENTER





# Earth Stewardship Celebration 2021

25<sup>th</sup> Anniversary of Planting Pride in Mansfield/Richland County



We all know that Earth Day is Every Day and the Earth Steering Committee is pleased to demonstrate just that, as we celebrate 25 years of Planting Pride in our community.

We are pleased to announce **April 1st through August 1st** have been declared Earth Stewardship Months in Mansfield & Richland County.

## How to become involved and Stay Safe...

Registration is easy! You can register your project in any one of the following ways:

- Mail the enclosed registration form OR
- Register by email to: [khildreth@ci.mansfield.oh.us](mailto:khildreth@ci.mansfield.oh.us) OR
- Call the Earth Stewardship Steering Committee: 419.755.9702
- Register online at: <http://bit.ly/3b4zQYT>

Deadline for Registration and completion of projects is **August 1, 2021**.

Before and after photos are due by **August 6, 2021**.

All Mansfield in Bloom **projects will automatically be registered to participate in the 25<sup>th</sup> Annual Earth Stewardship Celebration**. For additional information on Mansfield in Bloom, please contact Patrick Clinage at: [pclinage@richlandareachamber.com](mailto:pclinage@richlandareachamber.com) or 419-775-7234.

## Once you've registered...

- Recruit volunteers to assist you in the project you choose on the day you've designated.
- Send in a group photo to be displayed on Earth Stewardship Partner websites and social media recognizing you and your volunteers.
- Send in your photos and the names of your volunteers so they can be added to the drawing.
- If conducting a litter cleanup, afterward, please provide how many bags were collected.
- All volunteers will be entered individually into a drawing to win great prizes.
- Individual certificates for each participant are available upon request.



- All projects can be completed by practicing social distancing.
- Have designated "coordinators" for the distribution of supplies.
  - Have directions clear for pick up of supplies with signage on where to stand while waiting for their supplies.
- Don't forget safe distancing and protective masks/face coverings during pick up of supplies (and project if required).
- Remind volunteers to take their temperature, and if they have a fever of over 100.4, cough, shortness of breath, sore throat, chills, to please stay home and they can help on next year's project.
  - And ENJOY Planting Pride in Mansfield/Richland County.

## 10<sup>th</sup> Annual Take Pride Contest:

*\*not a requirement to participate in the 2021 Earth Stewardship Celebration.*

Please submit before and after photos of your project. **Photos are due by August 6<sup>th</sup>.**

**Contest categories:** Business, Government, Neighborhood, School, Church/Non-Profit Organization

**Awards:** Awards will be given for the top 3 places in each category. Plus, voters will choose their favorite cleanup projects based on photos submitted on the Earth Stewardship Facebook page. The winning entry will receive the **People's Choice Award**.

For more information or to register, contact Kim Hildreth, Earth Stewardship Steering Committee at the Mansfield Engineering Department. Phone: 419.755.9702 or email: [khildreth@ci.mansfield.oh.us](mailto:khildreth@ci.mansfield.oh.us).





# Celebrate Small Business!

## 2021 Small Business of the Year Awards Nomination



To be considered for the Richland Area Chamber & Economic Development Small Business of the Year Awards, the nominated business must:

- Be headquartered in Richland County
- Employ 250 or fewer full-time equivalent employees
- In operation for at least three years
- Have annual sales revenue of less than \$20,000,000
- Demonstrate an active concern for the community

### Eligible applicants will be judged on the following:

- Business History & Performance
- Staff Training & Motivation
- Community Involvement
- Customer Service
- Business Strategies & Goals

To be considered for the Richland Area Chamber Small **Non-Profit** of the Year Award, the nominated organization must:

- Be headquartered in Richland County
- Total budget \$1M or less
- In operation for at least three years
- Must be a 501c3 organization

### Eligible applicants will be judged on the following:

- Collaboration with other organizations
- Employee Practices
- Financial Performance (diversification, income streams, rainy day fund, etc).
- Customer Service
- Strategic Planning - long range

**To nominate a business or organization**, return this form OR email Lisa at [lduckworth@richlandareachamber.com](mailto:lduckworth@richlandareachamber.com) with your nomination selection(s)

Business Nominated \_\_\_\_\_

Contact Person \_\_\_\_\_ Title \_\_\_\_\_

Address \_\_\_\_\_ City \_\_\_\_\_ State \_\_\_\_\_ Zip \_\_\_\_\_

Telephone (day) \_\_\_\_\_ Fax \_\_\_\_\_ Email \_\_\_\_\_

Nominating Individual (Optional) \_\_\_\_\_

Email \_\_\_\_\_

Why are they deserving of the award (briefly):

---

---

---

Return To:

Richland Area Chamber & Econ. Development ~ 55 N. Mulberry St., ~ Mansfield OH 44902  
Fax: 419-526-6853 Email: [lduckworth@richlandareachamber.com](mailto:lduckworth@richlandareachamber.com)

**Deadline for nominations is September 1st, 2021.**





# To a brighter future

We believe in working together to build a stronger community for all.

**FirstEnergy**<sup>®</sup>

# NEW MEMBERS

PLEASE JOIN US IN WELCOMING THE NEWEST MEMBERS TO YOUR CHAMBER

**Arnold Insurance Agency- Paul Smith**

Category: Insurance  
Mansfield  
(567) 560-6940  
[www.arnoldinsuranceagency.com](http://www.arnoldinsuranceagency.com)

**Avita Bellville Walk-In Clinic**

Category: Medical & Health Services  
987 State Route 97, Bellville  
(567) 560-3790  
[www.avitahealth.org/services/walk-in-clinic](http://www.avitahealth.org/services/walk-in-clinic)

**Avita Heart- Cardiology and Vascular Medicine**

Category: Medical & Health Services  
715 Richland Mall, Ontario  
(419) 462-4600  
[www.avitahealth.org/services/cardiology](http://www.avitahealth.org/services/cardiology)

**Avita Pain Management**

Category: Medical & Health Services  
715 Richland Mall, Ontario  
(419) 462-4547  
[www.avitahealth.org/services/pain-management](http://www.avitahealth.org/services/pain-management)

**Avita WorkWell Occupational Health**

Category: Medical & Health Services  
710 Richland Mall, Ontario  
(419) 468-0630  
[www.avitahealth.org/services/occupational-health](http://www.avitahealth.org/services/occupational-health)

**Bauckman Farms**

Category: Agriculture  
1480 Pavonia W Road, Mansfield  
(567) 215-6741

**Blake's Sanitation LTD**

Category: Plumbing, Heating, Cooling  
220 State Route 60, New London  
(419) 929-0208

**Blue Technologies**

Category: Office Equipment, Supplies  
5885 Grant Ave., Cleveland  
(216) 271-4800  
[www.btoho.com](http://www.btoho.com)

**BrightView Mansfield**

Category: Medical & Health Services  
580 Park Avenue, Mansfield  
(833) 510-4357  
[www.brightviewhealth.com](http://www.brightviewhealth.com)

**Buckeye Community School**

Category: Educational Centers & Services  
1404 Park Ave West, Mansfield  
(833) 544-4BCS  
[www.buckeyecs.org](http://www.buckeyecs.org)

**Buckeye Council, Boy Scouts of America**

Category: Nonprofit Organizations  
40 W. Fourth St. Suite 117,  
Mansfield  
(330) 418-3282  
[www.buckeyecouncil.org](http://www.buckeyecouncil.org)

**Chick Fil A Strongsville**

Category: Restaurants  
16584 Royalton Road, Strongsville  
(330) 958-0521  
[www.cfasite.com/strongsville](http://www.cfasite.com/strongsville)

**Clearwater Systems**

Category: Water Treatment Services  
340 E Main Street, Lexington  
1-888-928-3710  
[www.clearwatersystems.com](http://www.clearwatersystems.com)

**Cline Security, LLC**

Category: Security Services & Systems  
159 N Trimble Road, Mansfield  
(419) 571-6387  
[www.clinesecurity.com](http://www.clinesecurity.com)

**East of Chicago Pizza Co - Galion and Shelby**

Category: Restaurants/Pizza  
759 Carter Dr., Galion  
(419) 468-8333  
[www.eastofchicago.com](http://www.eastofchicago.com)

**Eatmor Bundt Co**

Category: Restaurants  
837 Lexington Ave., Mansfield  
(419) 525-2868  
[www.eatmorbundt.com](http://www.eatmorbundt.com)

**Edge Plastics**

Category:  
Manufacturing, Industrial  
449 Newman Street, Mansfield  
(419) 522-6696  
[www.edgeplasticsinc.com](http://www.edgeplasticsinc.com)

**Fresh Eats And Sweet Treats, LLC**

Category: Mobile Food Vendor  
Mansfield  
(740) 341-0024

**Good Brotha's Pizza & BBQ**

Category: Restaurants, Food, Catering  
919 S Main Street, Mansfield  
(567) 247-6080  
[www.facebook.com/goodbrothas555](http://www.facebook.com/goodbrothas555)

**Heritage Health Care**

Category: Nursing Homes, Assisted Living, In-Home Health Services  
43 E Fourth Street, Mansfield  
(419) 747-9199  
[www.heritage-hcs.com](http://www.heritage-hcs.com)

**JAY the Barbher at Local Roots Salon**

Category: Barber Shop  
69 W Main St., Shelby  
(419) 342-7668

**KeyBank- Richland Mall**

Category: Financial Services  
688 N Lex.-Springmill Road, Ontario  
(419) 529-5214  
[www.Key.com](http://www.Key.com)

**LaborMAX Staffing**

Category: Employment Services  
864 Ashland Rd., Mansfield  
(567) 206-1109  
[www.labormaxstaffing.com](http://www.labormaxstaffing.com)

**Mid Ohio Med Consulting, LLC**

Category: Medical & Health Services/  
Physicians, Surgeons  
PO Box 3904, Mansfield  
(417) 709-2997

**NCS advertising & design**

Category: Website Design and Internet Services  
461 Robert Place, Bellville  
(419) 886-2349  
[www.ncs-ad.com](http://www.ncs-ad.com)

**Painted Cowgirl Western Store**

Category: Retail  
40 Main St., Greenwich  
(419) 752-3090  
[www.paintedcowgirlwesternstore.com](http://www.paintedcowgirlwesternstore.com)

**Pat Kracker Breast Cancer Fund**

Category: Nonprofit Organizations  
Mansfield  
(419) 610-4877  
[www.helpmepat.org](http://www.helpmepat.org)

**Richland County Land Reutilization Corporation**

Category: Nonprofit Organizations  
50 Park Avenue East, Mansfield  
(419) 774-5623  
[www.richlandcountylandbank.org](http://www.richlandcountylandbank.org)

**TFC Global**

Category: Churches  
PO Box 293, Mansfield  
(419) 378-2503  
[www.TFCGlobal.org](http://www.TFCGlobal.org)

**The Deli**

Category: Restaurants  
28 Park Ave W., Mansfield  
(419) 545-2084

**T-Mobile**

Category: Retail/Specialty Stores  
1406A Lexington Ave, Mansfield  
(419) 756-0122  
[www.t-mobile.com](http://www.t-mobile.com)



# RIBBON CUTTINGS





# A BUSY (AND PROMISING) MAY!



**Stump's Discount Merchandise- Shelby**



**MRCPL Library On the Go- Mansfield**



**LaborMax Staffing- Madison**



**BrightView- Mansfield**





## The official health insurer of **entrepreneurs**

---

You put everything you have into your business. And we put everything into creating high-quality health insurance plans for you and your employees. We've partnered with the Richland Area Chamber of Commerce and Council of Smaller Enterprises (COSE) to offer a unique benefit option for small businesses like yours. The multiple employer welfare arrangement (MEWA) allows small businesses of 1–50 to join together to share costs and combine risk. This offers rate stability, savings and the same great health benefits that large corporations have. Bundle your health plan with our dental, vision or life plans for a fully integrated benefits package.

**Contact your broker | [MedMutual.com/Richland](https://www.MedMutual.com/Richland)**



**MEDICAL MUTUAL®**

Health | Dental | Vision | Life



# CONNECT WITH YOUR COMMUNITY!

## Lunch WISE Wednesday

### The Power of Vision Boards

Presented by Nyasha Oden, LSW

When: **Wednesday, June 16th** | 11:45am - 1:00pm  
(lunch is served at 11:45am, program begins at 12pm)

**REGISTER**

Where: **Deluxe Catering & Events** - 28 N. Main Street, Mansfield  
Cost: \$15



Mark your calendar for the 3rd Wednesday of each month to join a group of dynamic, innovative local women for a time of powerful networking and motivation, as well as a chance to learn more about your community. This collaborative series exclusively for women is being co-hosted by the Richland Area Chamber and the Small Business Development Center at Ashland University.



**Nyasha Oden, LSW** is from Mansfield, Ohio. After high school she went on to pursue her Bachelor of Arts in Sociology at Wright State University. In May of 2019, Nyasha graduated from Case Western Reserve University with her Master of Science in Social Administration allowing her to become a Licensed Social Worker for the state of Ohio. She is currently working at the North End Community Improvement Collaborative (NECIC), a nonprofit where she runs programs involving youth and the elderly such as: R Rules, Open Tables, and North End Elder Program. Nyasha will discuss how vision boarding has changed her life and provide tips on why vision boarding is important. She will also provide steps on how to get started if you have never done one.

## FRI-YAY!

Topic: **Mansfield Art Center**

When: **Friday, June 25th** | 12:00 - 12:30pm

Where: **Facebook Live**

Cost: **FREE for Chamber members**

**REGISTER**



So many exciting things are happening in Richland County! Join us in our new series, Fri-Yay!, where we will celebrate good news in our community. You won't want to miss these 30 minute, monthly updates on the fourth Friday of each month at noon. We'll hear about the great things happening right where we live and work. There is no charge and you can simply join in on Facebook Live on the [Richland Area Chamber & Economic Development page](#). Like and share the event while it is live for a chance to win a gift card!

## Networking at Noon

When: **Friday, July 9th** | 12:00pm - 1:00pm

Where: **TBD**

Cost: **\$15 / members \$25 / non-members**  
(lunch from Wishmaker House included!)



How do we network in the age of COVID-19? Could you benefit from building more professional relationships? Is it important for you to meet prospective clients? Do you need to stay on top of the latest industry trends? Networking at Noon the answer! Networking allows you access to opportunities you might not be able to find on your own and is important for establishing mutually beneficial connections with other professionals in our community. If these are things that interest you, join us for Networking at Noon!

**THREE WAYS TO  
REGISTER:**

- 1) Use our events calendar at [www.richlandareachamber.com](http://www.richlandareachamber.com)
- 2) Call us at 419-522-3211
- 3) Email Lisa Duckworth at [lduckworth@richlandareachamber.com](mailto:lduckworth@richlandareachamber.com)

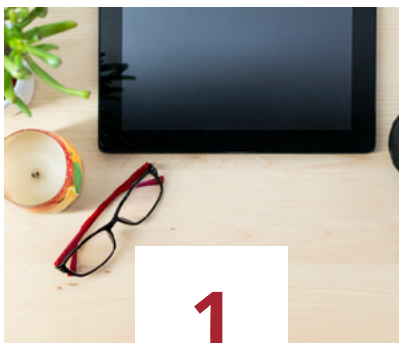


# Your LOCAL Office Supply Benefit



National contract savings with  
the local service you deserve!

Managing a workplace is more complex today. The Chamber has partnered with Ritter's Office Outfitters to help you take care of your people, your space and your budget. From home office to a corporate office space and so many moving parts, keeping things simple is an everyday challenge.



## National Chamber contract

Save big by utilizing a full list of 1,700 of the most often purchased items with national contract pricing. Free next day delivery always.



## More than office supplies

Your company can also save by taking advantage of special pricing on cleaning and breakroom supplies, technology, and furniture.



## Local support

You will have a local dedicated rep that will handle all aspects of your business needs, even for hard to find supplies.

For more information contact:

Contact: Nick Childs  
phone: 800-545-8000 ext. 1125  
email: [nchilds@charlesritter.com](mailto:nchilds@charlesritter.com)  
website: [www.charlesritter.com](http://www.charlesritter.com)



## Clint Knight

Director of Workforce Development  
Richland Area Chamber & Economic Development  
Phone: 419-522-3211  
Email: [cknight@chooserichland.com](mailto:cknight@chooserichland.com)



## Where are we going to find more people?

We are all seeing it. The "Now Hiring" and "Help Wanted" signs are everywhere. Business is still moving forward, and they are making it happen with less people. Business owners are getting extremely creative with their recruiting and retention efforts, as well as working to streamline and automate processes in order to maintain operations.

Now is the time to start thinking about where we will find the workforce of 2024, 2025, 2026 and so on.... Our largest resource for able-bodied employees are the school systems. In Richland County, there are approximately 1500 High School Seniors each year. Imagine what would happen if those students were tapped for our local workforce beginning as early as the 9th grade...or even earlier!?!?!?

A portion of this student population will move away to attend college, and never return. Another portion will move away for college, and return. But it is very possible, that as a business community, we could connect with a significant number of these students early. We could help them learn about the skills and education they need to be successful at existing businesses right here in Richland County. And we can help them find a place in the local workforce - without ever moving away or wondering what they're going to do after they graduate high school.

The Ohio Department of Education has taken aim at this very issue, and created a new pathway to graduation based around "Work Based Learning". Federal law defines work-based learning as "sustained interactions with industry or community professionals in real workplace settings, to the extent practicable, or simulated environments at an educational institution that fosters in-depth, firsthand engagement with the tasks required in a given career field, that are aligned to curriculum and instruction."

This program is available to the class of 2023 and beyond. Read the program details here. The time is now to be creative as business owners and find a way to engage with students before they are very near graduation. This is an incredible opportunity for education and business to partner closely in skill and career development.

Please feel free to reach out to me with ideas, questions, or interest in developing a long term talent pipeline through Work-Based Learning.

**Save the Date!**

## 2nd Annual Workforce Summit



**11am to 1:30pm August 2nd, 2021 at the Mid Ohio Conference Center**

**KeyNote Speaker:** Richie Contartesi  
The Ultimate Leadership Playbook: A New Opportunity to Grow Profitably Through Change

\$12.00 (includes box lunch)



**Looking for local workforce talent?**

**Build Your FREE Business Profile Today!**

Community Opportunity is a free comprehensive resource for students, job seekers, and area businesses alike to connect, network, and find/share employment opportunities within our community.

You will have access to local job seekers' resumes, and you'll also increase your organization's visibility and community engagement at no cost to you. To build your profile, visit [www.communityopportunity.com](http://www.communityopportunity.com) and click "Company Registration".

Questions? Contact Clint Knight, Director of Workforce Development at the Richland Area Chamber & Economic Development at 419-522-3211 or [cknight@chooserichland.com](mailto:cknight@chooserichland.com).



# Summer Safety Tips



- **Heat and Sun Safety**
- **Hyperthermia • Children in Cars**
- **Water and Swimming Safety**
- **Picnic Food Safety • Lightning Safety**
- **Preventing Mosquitos & Ticks**



**See the links at [richlandhealth.org](http://richlandhealth.org)**



# RICHLAND AREA CHAMBER & ECONOMIC DEVELOPMENT

Strong Business.  
Strong Community.

*Interested in enhancing  
your member benefits?*

Contact Ashley at 419-522-3211 or  
[ameyer@richlandareachamber.com](mailto:ameyer@richlandareachamber.com)

*Thank you to our renewing members!*

## BOOST & EXCEL

Goyal Industries  
Phillips Manufacturing/Shelby Welded Tube

Spitzer Motors of Mansfield

## BUILD & GROW

1-888-OhioComp  
Advantage Credit Union, Inc.  
Brass Hanger Cleaners  
D A International Casting Co., Wine Railcar Products  
Discount Parts Exchange  
Mansfield Distributing Company  
Mansfield Engineered Components

Mansfield Graphics  
Merrill Lynch  
Richland Engineering Limited  
Richland Sealcoating Company Inc  
Rinehardt Law Firm  
Sun Graphics

## ENGAGE & CONNECT

Absolute Assurance Restorations LLC  
ADM Benefit Plans Agency  
Akers Veterinary Hospital  
All Glass Systems  
Appleseed Realty DBA Appraisal Services  
North Central Ohio  
Ashland Cleaning LLC  
Bankz Salon  
Bauckman Farms  
Berean Baptist Church  
Blue Technologies  
Catalyst Life Services  
Catholic Charities Diocese of Toledo  
Crafty Clutter Inc  
Daisy Capital LTD  
Deja Food  
Dream Huge Realty

Floorcraft  
Grace Properties LTD  
Gutter Helmet Systems  
Hardline Heavy Equipment Solutions LLC.  
Heartland Design Concepts  
Heritage Health Care  
Independent Living Center of North Central Ohio  
Kloud9 IT, Inc.  
Mansfield Area YMCA  
Mansfield Memorial Homes  
NCS advertising & design  
Ohio Tech Medic  
Park Avenue Car Wash & Detailing Center  
Richland County Job & Family Services  
Richland County Youth & Family Council  
Rotary Club of Mansfield #3487

Rotunda Scientific Technologies  
SACS Consulting Inc  
Salvation Army Center for Worship & Service  
Short Circuit Electronics Repair  
Skyway East Ltd  
Steven P Curry Financial Services Inc  
Techman Sales Inc  
The Ball Agency  
The Crossings at Forest Glenn Condominiums  
The National Lime & Stone Company  
Total Merchant Services  
Towne Pharmacy  
Village of Lucas  
Whitaker's Natural Market  
Whitcomb & Hess CPAs & Financial Advisors



# UPCOMING EVENTS

- June 11** Chamber Golf Classic SOLD OUT
- June 16** Lunch WISE Wednesday Luncheon (11:45am) @ DLX / Kobacker Room
- June 25** FRI-YAY! - Facebook Live
- July 9** Networking at Noon
- Aug 2** Workforce Summit @ MOESC 11:30a - 1:30p
- Oct 26** Savor & Sip
- Dec 3** Small Business of the Year Awards

See inside this newsletter for more information on the above events or visit the event calendar at [www.richlandareachamber.com](http://www.richlandareachamber.com)



**RNI INC.**  
RICHLAND NEWHOPE INDUSTRIES, INC.  
"WHERE QUALITY MATTERS"  
[WWW.RNIINC.COM](http://WWW.RNIINC.COM)  
419-774-4400

## eRecycling

Drop off times  
9am - 2pm  
Local pick-up available charges will apply

971 West Longview  
Mansfield, Ohio 44906  
Questions Call: 419.774.4437

Call for accepted materials  
and pricing list





**419-522-0035**  
30 North Diamond (3rd floor City building)  
Mansfield, Ohio 44902  
Mon - Fri: 7am - 3:30pm  
Free Wi-Fi Inside  
[www.citygardencafe.org](http://www.citygardencafe.org)

## TRAINED EMPLOYEE OUTSOURCING

- Document Management
- Lawn and Ground Maintenance
- Wood Products
- Packaging
- Pallets
- Assembly
- Custodial Services
- Document Destruction

## Element of Art






s t u d i o / g a l l e r y

96 North Main Street, Mansfield, Ohio 44902  
Phone: (419) 522-2965  
[www.eoastudiogallery.com](http://www.eoastudiogallery.com)



## THANK YOU TO OUR CATALYTIC LEADER INVESTORS

**Cleveland**  
Financial Group  
Charles P. Hahn, CFP®



ADENA CORPORATION • NANOGATE NORTH AMERICA LLC & JAY INDUSTRIES • MEDICAL MUTUAL •  
MILLIRON AUTO PARTS • PHILLIPS MANUFACTURING / SHELBY WELDED TUBE  
AVITA HEALTH SYSTEM • EDGE PLASTICS • FIRSTENERGY CORP • HAMILTON INSURANCE GROUP, INC. •  
HUNTINGTON NATIONAL BANK • NEWMAN TECHNOLOGY • TEAM NEO