



RICHLAND AREA  
**CHAMBER**  
& ECONOMIC DEVELOPMENT  
Strong Business.  
Strong Community.

# Chamber Link



February  
2019

Richland Area Chamber of Commerce

# BUSINESS FEVER

14<sup>th</sup> Annual  
**EXPO**  
2019

Thursday, March 21<sup>st</sup>, 11-5pm

**PRIZES ~ GIVEAWAYS ~ DON'T MISS IT!**



Dan Seckel was selected by Eric Snyder to receive the Chairman's Award and Jodie A. Perry received the ATHENA Award.



The Business Excellence Award was presented to **Stoodt's Market & Main Street Market**, Jason Potes, the Distinguished Performance Award to **Barbara Lindsay** and **Jay Allred**, the Economic Impact Award to **Community Improvement Corporation of Shelby**, and the Investing in our Future Award to **Dr. Dorey Diab**. RYP also presented the Entrepreneurial Spirit Award to **Jake Penwell** and the Community Hero Award to **Jennifer Alt**.

See the Chamber facebook page for many more photos from this wonderful evening!



## ***Congratulations to Eric Gilbert (MT Business Technologies), the Chamber's 2018 Ambassador of the Year***



**THANK YOU to the entire team of Ambassadors!**  
**Words can't express how much we appreciate all you do!**

### **The Boyd-Eichinger-Brafford Group**

Private Wealth Management

615 Bally Row  
Mansfield, Ohio 44906  
419.527.4503

[www.fa.ml.com/boydeichingergroup](http://www.fa.ml.com/boydeichingergroup)



Merrill Lynch Wealth Management makes available products and services offered by Merrill Lynch, Pierce, Fenner & Smith Incorporated, a registered broker-dealer and Member SIPC, and other subsidiaries of Bank of America Corporation.

© 2018 Bank of America Corporation. All rights reserved. | AR4M9LKC | MLWM-100-AD | 07/2018

## **SPONSORSHIP & ADVERTISING OPPORTUNITIES**

All price ranges available!

For more information, contact the  
Chamber at 419-522-3211  
or [afanello@richlandareachamber.com](mailto:afanello@richlandareachamber.com)

### **EXCEEDING YOUR EXPECTATIONS!**



**MEETING SPACE  
from  
20 - 1,000 people**

We invite you to visit the  
**Mid-Ohio Conference Center**  
to explore the possibilities for your  
next meeting, seminar, or conference.

***Meet in the Middle!***

Centrally located between Cleveland & Columbus



**419-774-2513**

[www.midohioconferencecenter.com](http://www.midohioconferencecenter.com)



**Chamber & RCDG Staff** Contact us @ 419-522-3211 or e-mail us: [info@RichlandAreaChamber.com](mailto:info@RichlandAreaChamber.com)

Jodie A. Perry, CCE, IOM, CCEO-AP, President/CEO  
Lisa Duckworth, Program & Events  
Angie Fanello, Marketing & Communications  
Jessica Gribben, Economic Development Liaison

Clint Knight, Workforce Development  
Nikki Lewis, Chamber Foundation  
Ashley Meyer, Membership Services  
Roberta Perry, Assistant to CEO & Community Development  
Barrett Thomas, Economic Development

# BUSINESS BOOT CAMP ☆☆☆ SERIES PLUS

## What Customers Love - Stand Out & Get Noticed in a Noisy World

**When: Thursday, March 28<sup>th</sup> 11:30am – 1:30pm**

**Where: Holiday Inn, 116 Park Ave. West, Mansfield**

**The cost is \$20 for members/\$25 for non-members - please RSVP to reserve your spot (see registration information at bottom of page).**

It's an exciting time to grow a business — an era of infinite reach when customers are a click away and anyone can share their message. But doing business in a connected world has its challenges: increased competition, unlimited choices, and short attention spans. How will you compete when others outspend you on advertising? What will you do when customers are enticed to go elsewhere? What will *you* offer?



**What Customers Love** will show you how to stand out and reach your audience in a noisy world. By combining new-era marketing tactics with old-school service, bestselling author Patrick Hartory provides a roadmap to navigate a crowded marketplace. Harnessing the power of story, service, and personal relationships, attendees will leave with a proven strategy to cut through the noise and drive customers to their doors.

#### About Patrick

For over 20 years, Patrick Hartory has helped business leaders and organizations tell their stories. The founder and former head of a national marketing firm, Patrick has worked with Monster Energy, PBS, Capitol Records, Pro Bull Riding, AT&T, and a full roster of top artists and brands. Today, Patrick is a nationally recognized speaker and marketing influencer, author of numerous articles and three books including "What Customers Love: 10 Ways to turn Your Customers into Fans & Followers".



**When: Wednesday, February 20<sup>th</sup> 11:45– 1pm**

**Where: Deluxe Catering and Events**

28 N. Main St., Mansfield

Mark your calendar for the 3rd Wednesday of each month to join a group of dynamic, innovative local women for a time of powerful networking and motivation, as well as a chance to learn more about your community. The luncheon cost is \$15.00 - please RSVP to reserve your spot (see registration information at bottom of page).

## February topic: Women Business Enterprise National Council Certification

**Victoria Langer**



A former nursing student, Victoria Langer developed a line of medical products to ease patients' pain. Borne of a distinct need she first noticed as a nurse's aide and nursing school student-and that later became acutely personal-Langer set out to bring comfort to patients suffering from pressure wounds and bed sores.

She will be speaking about how she started and grew her business and on the importance of the Woman Business Enterprise National Council.

This collaborative series is being co-hosted by the Richland Area Chamber, Mind Body Align and the Small Business Development Center at NCSC.

### 3 WAYS TO REGISTER for these events (or any other Chamber event):

- Register online using the event calendar at [richlandareachamber.com](http://richlandareachamber.com)
- Call 419-522-3211
- Email [lduckworth@richlandareachamber.com](mailto:lduckworth@richlandareachamber.com)

# Special Thank You

*The following businesses have been members of the Richland Area Chamber of Commerce for at least 25 years, and are recognized as "Cornerstone Members". We truly thank you for your loyal support!*

AAA-Ohio Auto Club	Mansfield Association of REALTORS	Richland County Auditor
Advantage Credit Union, Inc.	Mansfield Christian School	Richland County Board of Dev Disabilities (Richland Newhope)
Alta Florist and Greenhouse	Mansfield City Schools District	Richland Co. Dept. of Job & Family Services
Amerascrew Inc	Mansfield Commerce Center Record Storage & Warehousing	Richland County Engineer
Appleseed Realty	Mansfield Correctional Institution	Richland County Foundation
Ashland University	Mansfield Distributing Company	Richland County Regional Planning Commission
Assured Partners	Mansfield Engineered Components	Richland County Transit
Bellville Flowers & Gifts	Mansfield Fire Museum Inc	Richland Engineering Limited
Berger Travel Agency	Mansfield Memorial Park	Richland Lumber Inc
Braintree Business Development Center	Mansfield Playhouse	Richland Newhope Industries Inc
Brass Hanger Cleaners	Mansfield Screw Machine Products	Richland Public Health
Brown Derby Roadhouse/Ont. Event Center	Mansfield-Richland County Public Library	Richland Sealcoating Company Inc
Buckeye Educational Systems	Marco Photo Service Inc	Rinehart-Walters-Danner & Associates
Buckeye Steamer Carpet Cleaner	Marco's Pizza	Ritter's Office Outfitters
Catalyst Life Services	McElvain Group Homes	RLB CPAs, Inc
Cement Products Inc	Mechanics Bank	Roby-Foster-Miller-Earick Insurance
Central Ohio Warehouse Co	Medical Arts Internists Inc	Rumpke Waste & Recycling
Chicago Title Agency of NCO, Inc	Medical Mutual	Salvation Army Ctr. for Worship & Serv.
City of Mansfield	Merrico Inc	Sam's Club
Cleveland Financial Group	Merrill Lynch	Schmidt Security Pro
Coldwell Banker Mattox McCleery Realtors	Metal Conversions Ltd	Scioto Services
Columbia Gas of Ohio	MHS Industrial Supply	Servpro of Rich. & Ashland Counties
Community Action for Capable Youth	Mid-Ohio Educational Service Center	Shelly & Sands Inc - Mansfield Branch
Contact Industries	Mid-Ohio Sports Car Course	Skyway East Ltd
Crystal Eyes Vision Center	Mid-State Multimedia Group	Sluss Realty Company
Culligan Quality Water of NCO	Miller's Diamond Jewelry	Snow Trails
D & D Emulsions Inc	Milliron Industries	Snyder Funeral Homes Inc
Dearman Moving & Storage	Mohican School in the Out-of-Doors Inc	Spectrum
Deluxe Catering and Events	Moritz Concrete	Spherion Staffing of Mid Ohio
Directions Credit Union	Morrison Drapery & Blinds	Spitzer Motors of Mansfield
DRM Productions Inc	MT Business Technologies	Spring Mill Furniture Barn
Domestic Violence Shelter Inc, The	Nanogate Jay Systems	St. Peter's Parish & School
Dunkin Jewelers Inc	Newman Technology	Staker Dental
E S Beveridge & Associates Inc	News Journal Media	Strassell's Machine Inc
Eberts Heating & Cooling	North Central State College	Strategic Wealth Management Group, The
Estep Express Inc	Ohio District 5 Area Agency on Aging	Sun Graphics
FirstEnergy Corp	Ohio Eye Associates Eye Surgery & Laser Ctr	Tarkowsky & Piper Co., LPA
First Federal Bank of Ohio	OhioHealth Heart & Vascular Physicians Group	Taylor Metal Products Company
Friendly House	OhioHealth Mansfield Home Care & Hospice	Techman Sales Inc
Fun Center Pools & Spas	OhioHealth Mansfield & Shelby Hospitals	Therm-O-Disc Inc
Gorman-Rupp Company, The	OhioHealth Mansfield Hospital Gift Shop	Thomas Heringhaus, DDS Theresa
Hales Sport Center Inc	OhioHealth Mansfield Imaging	Heringhaus DDS
Hamilton Insurance Group Inc.	OhioHealth Mansfield PainCare	Travelodge
Haring Realty	OhioHealth Mansfield Therapies	Tridico Screen Printing, Sign Co. & Embroidery
Holiday Inn & Suites	OhioHealth Mansfield WorkAble	Truck Sales & Service Inc
Hughey & Phillips LLC	OhioHealth Ontario Health & Fitness Ctr.	United Way of Richland County
Huntington National Bank	Ohio State University at Mansfield, The	Vector Security
Hursh Pharmacy	Ontario Local Schools	Wal-Mart
iHeartMedia	Pepsi Beverages Company	Wappner Funeral Directors Inc
Industrial Technical Sales & Service	Pioneer Career & Technology Center	Warren Rupp, Inc.
J & B Acoustical Inc	Port A Cook	Wayne's Country Market
Jones Potato Chip Company	Provident Companies, The	Weiss Industries
Kelly Services Inc	Purdy Construction Company	Weldon Huston & Keyser LLP
Kenneth J Molnar DDS	R. G. Smith Company	Wells Fargo Advisors LLC
Kidney Associates Inc.	RBC Inc	Whitaker-Myers Group
Kimble Septic & Porta-Pot Inc	Radiology Associates of Mansfield Inc	WMFD Television - WOZH Television
Kimmel Corp	Richland Academy of the Arts	WOB Accountants and Advisors
King Office Service Inc	Richland Aviation	Women's Care
Kleshinski Morrison & Morris, LLP	Richland Bank	Worner Roofing Company Inc
Lamar Advertising	Richland Blue Print.Com Inc	
Lexington Business Growth Association	Richland Carrousel Park Inc	
Mansfield Area YMCA		



Start 2019 with a (mostly) **FREE**  
**Baseline Health Check-up**  
at a **Richland Public Health**

# Community Health Screening

## Screening Services include:



### **Blood Pressure Reading** Cost: **FREE**

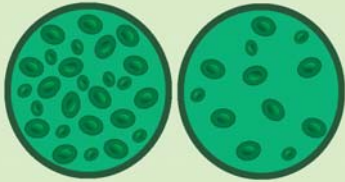
This simple check screens for hypertension (high blood pressure) and hypotension (low blood pressure).\* High blood pressure is a risk factor for cardiovascular disease.



### **Blood Sugar Check** Cost: **FREE**

*(3-hour fast preferred)*

This blood test screens for hyperglycemia (high blood sugar) and hypoglycemia (low blood sugar). One cause of high blood sugar is diabetes.\*



### **Anemia Check** Cost: **FREE**

With a small fingerstick, two blood tests (hemoglobin and hematocrit) check on red blood cells. Low hemoglobin and/or hematocrit can be a sign of anemia.\*



### **Cholesterol Check** Cost: **\$12.00. Cash or check only.** *(Requires 9-12-hour fast)*

With a small fingerstick, two blood tests (hemoglobin and hematocrit) check on red blood cells. Low hemoglobin and/or hematocrit can be a sign of anemia.\*



### **Education and Referrals** Cost: **FREE**

Receive information from a Public Health Nurse about various health issues and how to connect with community resources to assist you with your unique health and wellness needs.

Provided by Richland Public Health Nurses for All Adults in Richland County.

**See the Events Calendar at [richlandhealth.org](http://richlandhealth.org) for dates and locations.**

*\*This screening is not intended to diagnose any medical condition.*

*Any abnormal results should be confirmed by a healthcare provider.*

Richland Area Chamber Member

# SPOTLIGHT

## Sign, sign, everywhere a sign



Stan Butts, Guest Columnist  
Valleyview Country Getaway

This is the start of the popular song first made famous by the 'Five Man Electrical Band', an obscure Canadian group from the early 70's, commenting about the proliferation of signs dotting the landscape, but more than ever, we rely on signs to inform the public about who we are. In Mansfield/Richland County we are fortunate to have the Tridico Sign Company, with little stretch of the imagination we might call them the 'first family of signs'.

Starting out in Galion as Anthony Lee Screen Printing many years ago, they printed a stack of 'Sale signs' and then drove around to business offering the signs to the various retailers. Later on a family trip to California, Mick observed a unique style of sign. An inquiry to the owner resulted in a method of using steel cutouts of letters to mask a wood blank to create a letter forward sandblasted sign. Armed with this knowledge, the result was the first sandblasted sign created east of the Mississippi. Materials have changed but the concept remains.

After a name and location change to downtown Mansfield in 1975, the Tridico Sign Company continues to move forward. The company was purchased by Todd Tridico from his dad in later years. If you have the opportunity to speak with Todd and his wife Judy, the first thing that stands out is, in a word, 'passion'. A visit to their showroom is like a visit to an art gallery. Award winning logo designs, nostalgic neon, screen printing, vehicle graphics, window lettering, trade show displays, and more are some of their offerings.

If you have driven just about anywhere in town, you have seen their work: Gorman Rupp, Area Agency on Aging, and the Renaissance Theater to name a few. Large or small, consider Tridico Sign Company as a good choice. They may be contacted in person at 162 N. Diamond Street or by phone at 419-526-1695. Your sign should be as unique as you are!



January Chamber Coffee at Little Buckeye Children's Museum



Economic Club Luncheon featuring Falon Donohue, speaking about VentureOhio and entrepreneurship in Ohio.



# ST. PETER'S SCHOOL

*St. Peter's School encourages each child to achieve academic excellence, practice Christian spirituality, and prepare to be of service to the world.*



## ST. PETER'S MONTESSORI PRESCHOOL/KINDERGARTEN

Offers a unique and highly-respected program that includes language, reading, math, geography, and science during the surge of learning that, according to research, occurs from ages 2-6. Students who participate in the program are exceptionally well prepared to begin first grade, beyond the average expectations of a preschooler.

## ST. PETER'S ELEMENTARY

Students (traditional kindergarten through grade 6) are supported in the classrooms with advanced technology, attend Spanish classes, a choice of choir or band, and attend physical education and computer classes. The school also offers Individual Education Plans and Title One services for those students who qualify. Every student has an iPad. The after-school enrichment program is offered to every student.

## ST. PETER'S HIGH SCHOOL & JUNIOR HIGH

Offers a traditional and college-prep curriculum, including honors and AP courses and the College Credit Plus program. For those students who qualify, Individual Education Plans, Title One services, and an Auxiliary Service Program are available. The school provides an extensive science and math program, a selection of courses in art and the fine arts, dramatic arts, Spanish, along with many co-curricular and extra-curricular school activities. Every student has an iPad. With the Christian Service Program, students experience the benefits of assisting those less fortunate.

### OPEN HOUSE *Sunday, March 3*

Begins promptly at 1:00 p.m.

Meet administrators, teachers, staff and coaches

Visit with current St. Peter's School parents and children

Information on St. Peter's tuition assistance program

Details about State of Ohio School Choice Scholarship Programs

Building tours,

Fun, Games, Prizes

St. Peter's is an ODE certified provider school in the State of Ohio School Choice, Jon Peterson Special Needs, and Autism Scholarship Programs.

St. Peter's also encourages families to apply for scholarships through the St. Peter's Scholarship Program and Northwest Ohio Scholarship Fund and to apply for aid from the St. Peter's Annual Fund.

**Call today for more information!**

**419-524-2572**



104 West First Street  
Mansfield, OH 44902

[mansfieldstpeters.org](http://mansfieldstpeters.org)



*St. Peter's School admits students of any race, color, national and ethnic origin to all rights, privileges, programs and activities generally accorded or made available to students at the school. It does not discriminate on the basis of race, color, national and ethnic origin in administration of its educational policies, admissions policies, scholarship and loan programs and athletic and other school-administered programs.*



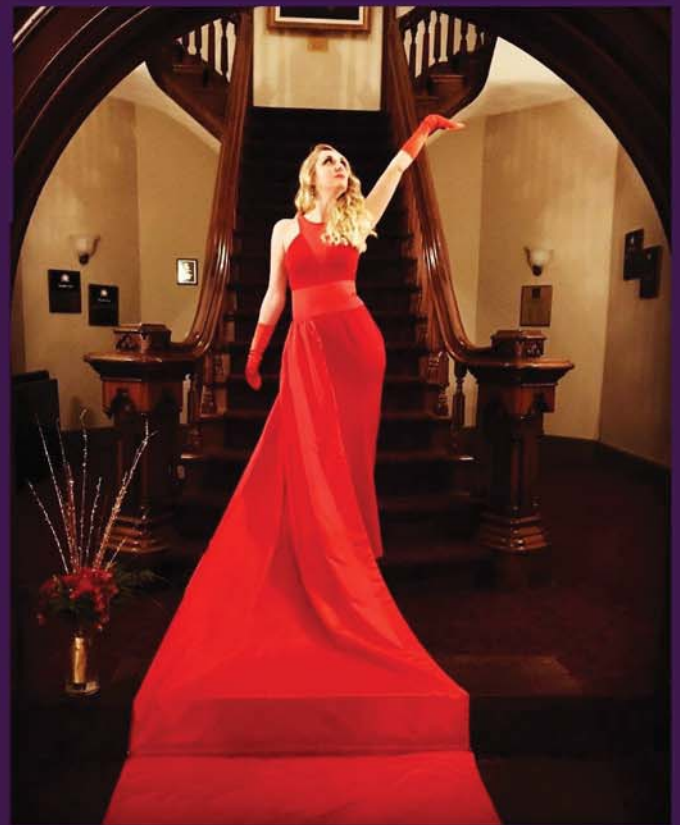
# *Prospering Life* **EVENTS**

YOU DREAM IT. WE CREATE IT.

Prospering Life Events specializes  
in Corporate Events and Galas.

We can assist with your own  
planning or we can handle all the  
details including planning,  
decorating, budget assistance,  
rental options, creating blueprints,  
vendor selection and more.

## Event Planning & Design



567-443-2387 [www.prosperinglifeevents.com](http://www.prosperinglifeevents.com)







# Eggs & Issues

## Legislative Breakfast

**Speaker** Martin Tremmel, Richland County Health Commissioner

**Date** Friday, February 15<sup>th</sup>, 2019

**Time** 7:30 - 8:45am

**Place** Brown Derby Roadhouse/Ontario Event Center, 3985 Park Ave. West

**Cost** \$15.00 Chamber Members - \$25.00 Non Members & Guests

Martin Tremmel, Richland County's Health Commissioner, will be providing an overview of Richland County health data and health department priority areas. In addition, he will present historical comparisons of disease rates at the local, state and national levels.



*You may also register online for this event at [www.richlandareachamber.com](http://www.richlandareachamber.com) from the Events page.*

**Cost: \$15.00 Chamber Members (\$25.00 Non-Members & Guests)**

Reservations must be cancelled two business days in advance to avoid being charged for the event.

Company \_\_\_\_\_

Name of Attendee(s) \_\_\_\_\_

\_\_\_\_\_

Check Number \_\_\_\_\_ Please Invoice \_\_\_\_\_ Pay at the door \_\_\_\_\_

Phone \_\_\_\_\_ Email \_\_\_\_\_

Credit Card # \_\_\_\_\_ Exp. \_\_\_\_\_

Street & Zip of Cardholder \_\_\_\_\_

***RICHLAND AREA CHAMBER OF COMMERCE***  
*55 N. Mulberry St. Mansfield, OH 44902 - Phone: (419) 526-6853*  
*Fax: (419) 526-6853 or [lduckworth@richlandareachamber.com](mailto:lduckworth@richlandareachamber.com)*



# DOOR PRIZE CONTRIBUTION FORM

## *Business Professionals Day Luncheon*

Wednesday, April 24 11:30am - 1:00pm

Mid-Ohio Conference Center

In 2018, we had 354 guests!



Business/Organization: \_\_\_\_\_

Contact Person: \_\_\_\_\_

Phone: \_\_\_\_\_ email: \_\_\_\_\_

Item(s): \_\_\_\_\_

\_\_\_\_\_

\_\_\_\_\_

\_\_\_\_\_

\_\_\_\_ Item enclosed      \_\_\_\_ Item will be dropped off/sent to the Chamber office

\_\_\_\_ Need pick up between (dates) \_\_\_\_\_ and \_\_\_\_\_

**Please respond by Friday, April 12:**

Mail to: Richland Area Chamber of Commerce  
55 N. Mulberry St. Mansfield OH 44902  
Fax to: 419-526-6853 Call: 419-522-3211  
Email: [lduckworth@richlandareachamber.com](mailto:lduckworth@richlandareachamber.com)



**RICHLAND AREA  
CHAMBER**  
& ECONOMIC DEVELOPMENT

Strong Business.  
Strong Community.

***Don't miss out on the opportunity to highlight your business by providing a door prize!  
Contributors will be listed in the program and announced during the drawing.  
Thank you for your participation!***



# Business After Hours



**February 21<sup>st</sup> 5-7 pm**  
134 North Main Street Mansfield

**Highlighting NECIC and Temp2Higher,  
along with other Downtown Businesses!**



THE  
**FOOD  
LAB**

## **Great Food, Networking & Door Prizes!**

Cost: Free to Members who register on or before 2/18/19  
Online registration is also available at [www.richlandareachamber.com](http://www.richlandareachamber.com)



Company \_\_\_\_\_

### Names & Emails of Attendees:

Name: \_\_\_\_\_ Email: \_\_\_\_\_

Name: \_\_\_\_\_ Email: \_\_\_\_\_

Name: \_\_\_\_\_ Email: \_\_\_\_\_

Name: \_\_\_\_\_ Email: \_\_\_\_\_

**Please RSVP No Later  
Than February 18th, 2019**

**Richland Area Chamber of Commerce**  
55 N. Mulberry St. - Mansfield, OH 44902  
Phone: (419) 522-3211 . Fax: (419) 526-6853  
email: [lduckworth@richlandareachamber.com](mailto:lduckworth@richlandareachamber.com)

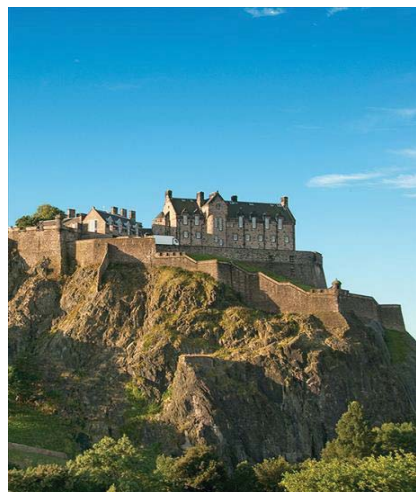




# Richland Area Chamber of Commerce presents

## Discover Scotland

Departing September 22 – October 1, 2019



Book Now  
& Save  
**\$250**  
Per Person

### Highlights...

Bagpipe Lesson • Whisky Distillery • Isle of Skye •  
Armada Castle • Loch Ness • Orkney Islands •  
Dunrobin Castle • Sheepdog Demonstration •  
St. Andrews • Choice on Tour • Edinburgh Castle  
• Scottish Cooking Experience

**10 Days • 14 Meals: 8 Breakfasts • 6 Dinners**

**BOOK NOW: Double \$4,049; Single \$4,799; Triple \$4,019**

Regular rates: Double \$4,299; Single \$5,049; Triple \$4,269

*\* All Rates are Per Person and are subject to change*

**Included in Price:** Round Trip Air from Columbus Intl Airport, Air Taxes and Fees/Surcharges, Hotel Transfers

**Not included in price:** Trip Protection Insurance

**AAA Members will receive an additional \$50 off per person**

**Upgrade your in-flight experience with Elite Airfare**

Additional rate of: Business Class \$4,390

† Refer to the reservation form to choose your upgrade option

**IMPORTANT CONDITIONS:** Your price is subject to increase prior to the time you make full payment. Your price is not subject to increase after you make full payment, except for charges resulting from increases in government-imposed taxes or fees. Once deposited, you have 7 days to send us written consumer consent or withdraw consent and receive a full refund. (**See registration form for consent.**)

### JOIN US TO LEARN MORE:

Thursday, January 15<sup>th</sup>, 2019  
6:00 – 7:00pm

Location: Chamber Office  
(55 N. Mulberry Street)

**RSVP to the Chamber 419-522-3211**

#### Day 1: Overnight Flight

An overnight flight transports you to a country of stunning landscapes, lively cities and stirring history.

#### Day 2: Glasgow, Scotland - Tour Begins

Your tour opens in Glasgow, Scotland's Victorian capital city. Start your Scottish adventure with a **visit to the National Piping Centre**. After a demonstration and lesson with a renowned piper, it's your chance to give it a go! Then, join your fellow travelers for a lively welcome dinner at the Centre's farm-to-table restaurant. *Today dinner will be included.*

#### Day 3: Glasgow - Glencoe - Ballachulish

Enjoy a leisurely morning in Glasgow before visiting one of Scotland's renowned whisky distilleries. Taste and see for yourself why Highland malt whisky is considered the world's finest. Continue on to the Highlands, through the breathtaking scenery of Glencoe and Rannoch Moor, before arriving at your hotel situated on lovely Loch Linnhe. *Today breakfast and dinner will be included.*

#### Day 4: Ballachulish - Isle of Skye - Ballachulish

Take a stunning drive along the "Road to the Isles" and over the Skye Bridge to the legendary Isle of Skye, also known in poetry and

song as Eilean a' Cheò (The Misty Isle). Enjoy dramatic views of the Cuillin Hills. Then, visit Armadale Castle & Gardens\* and the Museum of the Isles to learn about island life and the history of Skye. Conclude your visit with views of the isle from yet another vantage point during a ferry crossing back to the mainland. Returning to Ballachulish, see Glenfinnan where Bonnie Prince Charlie rallied the clansmen for battle during the 1745 Jacobite Rebellion. *Today breakfast and dinner will be included.*

#### Day 5: Ballachulish - Loch Ness - Thurso

Today, enjoy stunning and unspoiled landscapes as you journey further into the Highlands. Visit the striking ruins of Urquhart Castle before enjoying a **cruise on Loch Ness**, one of Britain's most scenic bodies of water. Keep your eyes open — you never know when Nessie will appear! Travel through the Great Glen, famous for its many lochs (lakes). Your day concludes in Thurso. *Today breakfast will be included.*

#### Day 6: Thurso - Orkney Islands - Thurso

A day of adventure awaits as you voyage by ferry to the Orkney Islands\*\* — once a Viking stronghold off the coast of Scotland. On the crossing you'll see abundant bird life and, if you are lucky,



porpoises and seals. A local guide introduces this magical place that very few visitors to Scotland get to experience. Visit Skara Brae where you will discover the remains of a Neolithic village built at the same time as the Great Pyramids in Egypt. Next, pass the prehistoric Ring of Brodgar, reported to be older than Stonehenge. Visit the town of Viking Kirkwall before returning to the mainland. *Today breakfast and dinner will be included.*

#### Day 7: Thurso - Eastern Highlands

Today you will **visit Culloden Battlefield**. On this spot in April 1746, a half-hour battle changed the course of Scotland's history. We also stop at the majestic Dunrobin Castle\*\*\*\* which dates back to the 1300s. Take in the breathtaking views as you drive along the windswept cliffs of Scotland's east coast. Enjoy an overnight stay in the Eastern Highlands. *Today breakfast and dinner will be included.*

#### Day 8: Eastern Highlands - Pitlochry - St. Andrews - Edinburgh

Begin your day with a visit to a family-run farm set in the heart of the Highlands. See sheepdogs at work while surrounded by the mountain wilderness of Cairngorms National Park. Continue on to the vibrant Victorian town of Pitlochry for some time at leisure before traveling to St. Andrews, the beautiful town in the Kingdom of Fife that gave the world the game of golf. See the Royal and Ancient Clubhouse and the famous Old Course. End your day in

Scotland's capital city of Edinburgh. *Today breakfast will be included.*

#### Day 9: Edinburgh

Today **it's your choice!** Choose to get acquainted with this regal capital on a locally guided panoramic city tour, exploring both the Old and New towns before visiting the Palace at Holyroodhouse.\*\*\*\* the Queen's official residence in Edinburgh and former home of Mary Queen of Scots **-OR-** for a different perspective you may join a local expert and explore the Old Town and Royal Mile on foot; descend into the city's vast underground vaults and uncover a world unchanged since the 18th century. Both choices include a **visit to Edinburgh Castle**, home of the Scottish Crown Jewels. This evening, give traditional Scottish ingredients a modern twist. **Enjoy a lively and interactive cooking experience** at one of Scotland's premier culinary institutions. With a "wee dram" in hand, toast the end of a wonderful journey. *Today breakfast and dinner will be included.*

#### Day 10: Edinburgh - Tour Ends

Your tour of Scotland comes to a close today. *Today breakfast will be included.*

### Experience It!

### The National Piping Centre

Now it's time for some distinctly Scottish music as we visit the National Piping Centre. From your very first steps into this remarkable building you'll be charmed by the unique sounds of the bagpipe. Join an expert who will lead you through the museum to gain insight into the history of this intriguing instrument. Discover its true importance to Scottish culture, past and present. Then, it's your chance to learn how to play! After a short demonstration, give it a try for yourself. Receive your chanter (the piece of the bagpipe that creates the melody) for a bit of practice. Once you get the hang of it, you'll have the opportunity to try out the full instrument. Now that you have worked up an appetite, enjoy dinner at the Centre's lovely farm-to-table restaurant. Savor a modern take on traditional Scottish cuisine and then cap off your evening like a true Scotsman — with a wee dram of whisky!

#### YOUR ITINERARY AT A GLANCE

Day	1	Overnight Flight
Day	2	Radisson Blu Hotel Glasgow, Glasgow
Day	3, 4	Ballachulish Hotel, Ballachulish
Day	5, 6	Royal Hotel Thurso, Thurso
Day	7	Grant Arms Hotel, Grantown-on-Spey
Day	8, 9	Radisson Blu Edinburgh, Edinburgh

On some dates alternate hotels may be used.

**AAA Vacations® Flagship:** AAA Vacations® tours open the door to a world of amazing destinations. Marvel at must-see sights, sample regional cuisine, stay in centrally located hotels and connect with new and captivating cultures. These itineraries offer an inspiring and easy way to experience the world, where an expert guide takes care of all the details.

#### Please Note:

Book Now rates valid until Mar 22, 2019, valid on air inclusive packages only.

Economy air rate and schedule are applicable for groups of 10 or more traveling on the same flights and dates.

Guests arriving in Edinburgh from August 2-24, 2019 will receive tickets to Edinburgh's famous Military Tattoo show.

\*Armada Castle and Gardens is open from April to October. On other dates a visit to Eilean Donan Castle will be substituted.

\*\*Weather conditions may sometimes prevent operation of the ferry to the Orkney Islands. In these cases, your Tour Manager will substitute activities on the mainland.

\*\*\*Dunrobin Castle is open from April to October. When it is closed you will visit Fort George or similar.

\*\*\*\*The Palace of Holyroodhouse may occasionally be closed when the Queen is in residence or for official state functions.

To complete your tour, we include roundtrip airport-to-hotel transfers when purchasing our airfare with your tour. If you have arranged for your own air, we are pleased to provide you the option of purchasing these transfers. Please note that all transfers will leave at pre-scheduled times.

Single accommodations are limited and are available on a first come, first served basis.

Days and features are interchangeable.

Our air passengers will arrive into Glasgow airport. Our arrival transfers will depart from this airport for your hotel.

Our air passengers will depart from Edinburgh airport. Our departure transfers will depart from your hotel for Edinburgh airport.

Please be advised many airlines do not provide advance seat assignments until check-in at the airport. Advance seating will be subject to the airline's terms and conditions.

#### IDENTIFICATION

Passports are required for this tour at your expense. Certain countries require a minimum of 6 months passport validity from date of return home. You are strongly urged to contact the appropriate consulate for details. Visit [www.travel.state.gov](http://www.travel.state.gov) for the U.S. State Department for the latest details about passports and visa requirements.

**IMPORTANT:** We recommend that our clients traveling abroad take a photocopy of their passport and applicable visas. It should be packed separately from your actual passport and visa. We also recommend leaving a copy at home with your emergency contact.

This tour includes moderate physical activity. The itinerary blends some longer days with shorter days and more leisure time. Walking tours, as well as walking slightly longer distances, upstairs or on uneven walking surfaces, should be expected.

CST#2006766-20 UBN#601220855 Nevada Sellers of Travel Registration No. 2003-0279

**For more information contact: Jamie Amsbaugh • AAA Ohio Auto Club • (419) 529-8500 • [jamsbaugh@aaaohio.com](mailto:jamsbaugh@aaaohio.com)**



Richland Area Chamber of Commerce

# BUSINESS FEVER



**Thursday, March 21<sup>st</sup>, 11-5pm**

**Public Welcome - visit with 100 local businesses**

**Bring Your Friends • Family • Neighbors • Co-workers**

**Food Drive**  
Bring a canned good for  
a chance to win more prizes!

**FREE ADMISSION!**



**March 21 • 11<sup>am</sup>-5<sup>pm</sup>**



**at the Richland County Fairgrounds**

**Bring your PRIZE DRAWING TICKET to the BUSINESS EXPO**

**More tickets available at:**

**RichlandAreaChamber.com ~ 419-522-3211**

**Sponsors** (as of January)



**Coldwell Banker Mattox McCleery Realtors**

**Directions Credit Union**

**Gordon Flesch Company**

**Huntington National Bank**

**Mid-Ohio Educational Service Center**

**Spyder Signs**

**Carothers Pest Control LLC**

**Donley Ford of Shelby**

**EverDry Waterproofing**

**Richland Mall**

**Richland Newhope Industries Inc**

**Southern Title of Ohio**

**Sun Graphics**

**Transformation Network**

**Questions? 419-522-3211 [www.RichlandAreaChamber.com](http://www.RichlandAreaChamber.com)**

**PRIZES ~ GIVEAWAYS ~ DON'T MISS IT!**



Richland Area Chamber of Commerce



It will be  
**GROOVY**

**Hurry!**  
**Booths are**  
**limited!**

**DETAILS:**

- **Thursday, March 21<sup>st</sup>, 11-5pm, at the Richland County Fairgrounds**
- **Set up will take place from 3-5pm on Wed., March 20<sup>th</sup>** to allow for the "Expo Eve" **Business After Hours** taking place 5-7pm that evening - last year 300+ attended!
- Enjoy an exciting "Seventies Business Expo Fever" theme!
- Booth prizes will be awarded for: Most Creative, Best Use of Theme, & People's Choice
- A special breakfast will be held just prior to the opening of the Expo, providing vendor networking, coffee & donuts
- Admission will be free, and once again, we will find various ways to promote the Expo to the public.

**COST:** The booth cost is \$230. Booth size is 8'x10'. This includes 8 ft. table, 2 chairs, and electricity/wifi.

*THIS EVENT WILL SELL OUT! TO GUARANTEE A SPOT, PLEASE RESPOND PROMPTLY!*

**COMPLETE FORM AND RETURN WITH PAYMENT AS SOON AS POSSIBLE TO RESERVE YOUR BOOTH**

Booths are first come, first serve. Online registration is available by visiting the event calendar at [www.RichlandAreaChamber.com](http://www.RichlandAreaChamber.com))

☐ We agree to have our booth set up from 5-7pm on March 20<sup>th</sup> for the Expo Business After Hours AND from 10:30am-5:00pm on March 21<sup>st</sup> for the Expo. We understand that cancellations after March 1<sup>st</sup> are non-refundable.

**Organization:** \_\_\_\_\_

**Address:** \_\_\_\_\_

**Contact person:** \_\_\_\_\_ **Email:** \_\_\_\_\_

**Phone:** \_\_\_\_\_ **Fax:** \_\_\_\_\_

**PAYMENT:** ☐ check enclosed ☐ VISA/MC/DISC# \_\_\_\_\_

exp. \_\_\_\_/\_\_\_\_ Security Code \_\_\_\_\_

Address of Cardholder \_\_\_\_\_

**Phone:** 419-522-3211 • **Fax:** 419-526-6853 • **Email:** [lduckworth@richlandareachamber.com](mailto:lduckworth@richlandareachamber.com)

**Mail:** Richland Area Chamber of Commerce • 55 N. Mulberry St., Mansfield 44902

# Expo

## SPONSORSHIPS

### Disco Queen Sponsor — \$1,000

0 Available (4 have been sold)

- Double booth space in a prime location
- An aisle sign will be hung with your company name and also printed on booth maps
- Logo (large) on booth map provided to attendees
- Logo (large) on banner displayed at Expo
- Logo (large) on goodie bag given to attendees
- Logo (large) on posters displayed at Expo
- Logo on any major print media & additional Expo ads such as radio (name), billboard and print
- Logo & link on Chamber website for Expo
- Logo promotion on Chamber social media
- Paid Expo social media campaign featuring company photo (\$\$\$\$)
- Logo in Chamber Newsletter promotion
- Up to 3 items in goodie bag given to attendees
- Logo & link on Chamber email blasts for Expo

### Groovy Baby Sponsor — \$750

- One (1) booth space in a prime location
- Logo (small) on booth map provided to attendees
- Logo (small) on banner displayed at Expo
- Logo (small) on goodie bag given to attendees
- Logo (small) on posters displayed at Expo
- Logo on any major print media advertising
- Logo & link on Chamber website for expo
- Logo promotion on Chamber social media
- Paid Expo social media campaign featuring company photo (\$\$\$)
- Logo in Chamber Newsletter promotion
- Up to 2 items in goodie bag given to attendees
- Logo on Chamber email blasts for Expo

### Dyno-Mite Sponsor — \$500

- Save \$100 on a booth space
- Name on booth map provided to attendees
- Name on banner displayed at Expo
- Name on goodie bag given to attendees
- Name on posters displayed at Expo
- Name on any major print media advertising
- Name & link on Chamber website for Expo
- Name promotion on Chamber social media
- Paid Expo social media campaign featuring company photo (\$\$)
- Name in Chamber Newsletter promotion
- One (1) item in goodie bag given to attendees
- Name listed on Chamber email blasts for Expo

### Funky Sponsor — \$250

- Save \$75 on a booth space
- Name on booth map provided to attendees
- Name on banner displayed at Expo
- Name on posters displayed at Expo
- Name on any major print media advertising
- Name on Chamber website for Expo
- Name promotion on Chamber social media
- Paid Expo social media campaign featuring company photo (\$)
- Name in Chamber Newsletter promotion
- Name listed on Chamber email blasts for Expo

**PLEASE SUBMIT YOUR SPONSORSHIP AS SOON AS POSSIBLE TO RECEIVE MAXIMUM EXPOSURE!**  
Online payment is available by visiting the event calendar at [www.RichlandAreaChamber.com](http://www.RichlandAreaChamber.com)

Organization: \_\_\_\_\_

Address: \_\_\_\_\_

Contact person: \_\_\_\_\_ Email: \_\_\_\_\_

Payment Amount: \_\_\_\_\_ ☐ check enclosed ☐ VISA/MC/DISC# \_\_\_\_\_

exp. \_\_\_\_/\_\_\_\_ Security Code \_\_\_\_\_

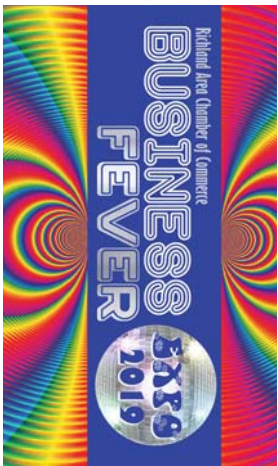
Address of cardholder: \_\_\_\_\_

**Phone:** 419-522-3211 • **Fax:** 419-526-6853 • **Email:** [lduckworth@richlandareachamber.com](mailto:lduckworth@richlandareachamber.com)

**Mail:** Richland Area Chamber of Commerce • 55 N. Mulberry St., Mansfield 44902



— ADMIT ONE —



See 100 local businesses showcase their products & services!

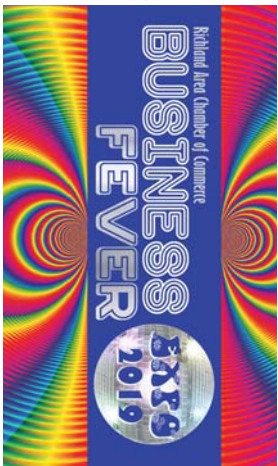
*Bring this completed ticket!  
This is your*  
**PRIZE DRAWING  
TICKET**

## Business Expo

Thurs, March 21 11am- 5pm  
at the Richland Co. Fairgrounds  
Bring a Canned Good for Prize Drawing  
FREE EXPO BAG to 1<sup>st</sup> 500 Guests

— ADMIT ONE —

— ADMIT ONE —



See 100 local businesses showcase their products & services!

*Bring this completed ticket!  
This is your*  
**PRIZE DRAWING  
TICKET**

## Business Expo

Thurs, March 21 11am- 5pm  
at the Richland Co. Fairgrounds  
Bring a Canned Good for Prize Drawing  
FREE EXPO BAG to 1<sup>st</sup> 500 Guests

— ADMIT ONE —

— ADMIT ONE —



See 100 local businesses showcase their products & services!

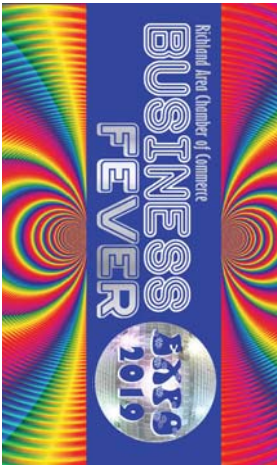
*Bring this completed ticket!  
This is your*  
**PRIZE DRAWING  
TICKET**

## Business Expo

Thurs, March 21 11am- 5pm  
at the Richland Co. Fairgrounds  
Bring a Canned Good for Prize Drawing  
FREE EXPO BAG to 1<sup>st</sup> 500 Guests

— ADMIT ONE —

— ADMIT ONE —



See 100 local businesses showcase their products & services!

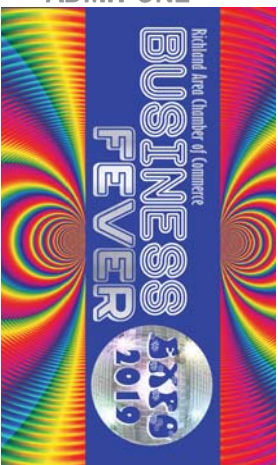
*Bring this completed ticket!  
This is your*  
**PRIZE DRAWING  
TICKET**

## Business Expo

Thurs, March 21 11am- 5pm  
at the Richland Co. Fairgrounds  
Bring a Canned Good for Prize Drawing  
FREE EXPO BAG to 1<sup>st</sup> 500 Guests

— ADMIT ONE —

— ADMIT ONE —



See 100 local businesses showcase their products & services!

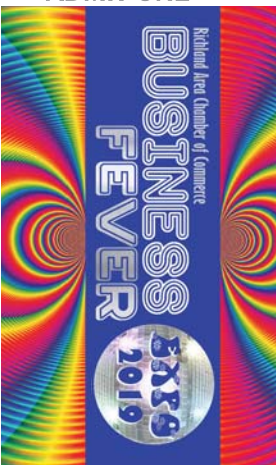
*Bring this completed ticket!  
This is your*  
**PRIZE DRAWING  
TICKET**

## Business Expo

Thurs, March 21 11am- 5pm  
at the Richland Co. Fairgrounds  
Bring a Canned Good for Prize Drawing  
FREE EXPO BAG to 1<sup>st</sup> 500 Guests

— ADMIT ONE —

— ADMIT ONE —



See 100 local businesses showcase their products & services!

*Bring this completed ticket!  
This is your*  
**PRIZE DRAWING  
TICKET**

## Business Expo

Thurs, March 21 11am- 5pm  
at the Richland Co. Fairgrounds  
Bring a Canned Good for Prize Drawing  
FREE EXPO BAG to 1<sup>st</sup> 500 Guests

— ADMIT ONE —

— ADMIT ONE —



See 100 local businesses showcase their products & services!

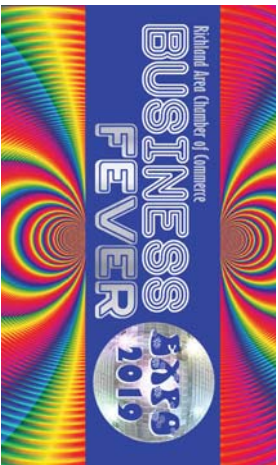
*Bring this completed ticket!  
This is your*  
**PRIZE DRAWING  
TICKET**

## Business Expo

Thurs, March 21 11am- 5pm  
at the Richland Co. Fairgrounds  
Bring a Canned Good for Prize Drawing  
FREE EXPO BAG to 1<sup>st</sup> 500 Guests

— ADMIT ONE —

— ADMIT ONE —



See 100 local businesses showcase their products & services!

*Bring this completed ticket!  
This is your*  
**PRIZE DRAWING  
TICKET**

## Business Expo

Thurs, March 21 11am- 5pm  
at the Richland Co. Fairgrounds  
Bring a Canned Good for Prize Drawing  
FREE EXPO BAG to 1<sup>st</sup> 500 Guests

— ADMIT ONE —

Invited By:

Attendee

Name \_\_\_\_\_

Phone # \_\_\_\_\_

Email (we will invite you to the 2019 Expo!)

\_\_\_\_\_

Please enter only once for this drawing.  
Need not be present at time of drawing.



Proud  
Member

Invited By:

Attendee

Name \_\_\_\_\_

Phone # \_\_\_\_\_

Email (we will invite you to the 2019 Expo!)

\_\_\_\_\_

Please enter only once for this drawing.  
Need not be present at time of drawing.



Proud  
Member

Invited By:

Attendee

Name \_\_\_\_\_

Phone # \_\_\_\_\_

Email (we will invite you to the 2019 Expo!)

\_\_\_\_\_

Please enter only once for this drawing.  
Need not be present at time of drawing.



Proud  
Member

Invited By:

Attendee

Name \_\_\_\_\_

Phone # \_\_\_\_\_

Email (we will invite you to the 2019 Expo!)

\_\_\_\_\_

Please enter only once for this drawing.  
Need not be present at time of drawing.



Proud  
Member

Invited By:

Attendee

Name \_\_\_\_\_

Phone # \_\_\_\_\_

Email (we will invite you to the 2019 Expo!)

\_\_\_\_\_

Please enter only once for this drawing.  
Need not be present at time of drawing.



Proud  
Member

Invited By:

Attendee

Name \_\_\_\_\_

Phone # \_\_\_\_\_

Email (we will invite you to the 2019 Expo!)

\_\_\_\_\_

Please enter only once for this drawing.  
Need not be present at time of drawing.



Proud  
Member

Invited By:

Attendee

Name \_\_\_\_\_

Phone # \_\_\_\_\_

Email (we will invite you to the 2019 Expo!)

\_\_\_\_\_

Please enter only once for this drawing.  
Need not be present at time of drawing.



Proud  
Member

Invited By:

Attendee

Name \_\_\_\_\_

Phone # \_\_\_\_\_

Email (we will invite you to the 2019 Expo!)

\_\_\_\_\_

Please enter only once for this drawing.  
Need not be present at time of drawing.



Proud  
Member



# Dog Groomers BANK

Experience customized business banking  
for your unique small business needs.

**Mechanics**  
BANK

That's Better.

MyMechanics.com

Member FDIC

## Upcoming Events

- 2/12/19 — Business Advocacy Committee 8am
- 2/13/19 — Executive Committee 7:30am-9am
- 2/13/19 — Lunch WISE Committee meeting 1pm
- 2/15/19 — Eggs & Issues Breakfast with  
Health Commissioner-Martin Tremmel  
7:30am-8:45am
- 2/16/19 — Chamber & RCDG Board meeting 7am
- 2/20/19 — Lunch WISE Wednesday Women's Luncheon  
12pm
- 2/21/19 — Business After Hours NECIC/Temp2Higher  
5-7pm
- 3/1/19 — Membership 101
- 3/7/19 — Legislative After Hours @ Westbrook 5-7pm
- 3/20/19 — Expo Eve Business After Hours, 5pm-7pm
- 3/21/19 — Business Expo, 11am-5pm
- 3/28/19 — Business Boot Camp Plus 11:30am-1:30pm
- 4/24/19 — Business Professionals Day Luncheon
- 5/2/19 — Job Fair 12-5pm
- 6/28/19 — Member Appreciation Lunch

*Watch your e-mail for  
more upcoming events!*

## Photography was a tall order at the Annual Meeting!



Economic Forecast Breakfast featuring Bruce McCain, Chief Investment Strategist for Key Private Bank



419-522-0035

30 North Diamond (3rd floor City building)  
Mansfield, Ohio 44902

Mon - Fri: 7am - 3:30pm

Free Wi-Fi Inside

[www.citygardencafe.org](http://www.citygardencafe.org)



RICHLAND NEWHOPE INDUSTRIES, INC.

"WHERE QUALITY MATTERS"

[WWW.RNIINC.COM](http://WWW.RNIINC.COM)

419-774-4400

## eRecycling

Drop off times  
9am - 2pm

Local pick-up available charges will apply

971 West Longview  
Mansfield, Ohio 44906  
Questions Call: 419.774.4437

Call for accepted materials  
and pricing list



## Element of Art



s t u d i o / g a l l e r y

96 North Main Street, Mansfield, Ohio 44902

Phone: (419) 522-2965

[www.coaststudiogallery.com](http://www.coaststudiogallery.com)



## TRAINED EMPLOYEE OUTSOURCING

- Document Management
- Lawn and Ground Maintenance
- Wood Products
- Packaging
- Pallets
- Assembly
- Custodial Services
- Document Destruction



Selecting the right health insurance plan shouldn't be a guessing game.

## CLEARLY THE RIGHT CHOICE

Learn more about a Medical Mutual health plan through the Richland Area Chamber of Commerce, and why it can be your company's clear choice, by visiting [RichlandAreaChamber.com](http://RichlandAreaChamber.com).



MEDICAL MUTUAL®

[f MedMutual.com](https://www.facebook.com/MedMutual) [y](https://www.youtube.com/MedMutual)

© 2012 Medical Mutual of Ohio

The Board and Staff of the Richland Area Chamber of Commerce wish to recognize and thank the following members for their sustaining contributions and support of the Chamber:

